

Week of March 25, 2002:

Structural Steel erection continued. Rough erection is complete to "B" line. Welding of moment connections continues. (See attached file: K to B line.JPG) (See attached file: Welding at Moment connection.JPG)

Pad A/2 had not been placed earlier to allow better access for the steel delivery trucks. During the excavation for this pad conflicts with an existing steam line were discovered. (See attached file: Steam Line Conflict.JPG) A plan to span over this pipe was formulated but additional conflicts arose. (See attached file: A2Pad looking East.jpg) The structural engineer is currently working on a solution. The completion of steel erection will be delayed until the foundation corrections can be made and sufficient strength achieved in the concrete (cure time).

The steel framing was installed at the Mechanical Room. The attached pictures illustrate the coordination challenges this compact space presents. (See attached file: Mech. Room Roof Framing.JPG) (See attached file: Low Beam 2.JPG)

The tree trimming was scheduled for Friday March 29th and completed on that day. The work was performed by University employees under the direction of Erick Smith, Urban Forester. (See attached file: Tree Trimming.JPG)(See attached file: DSC00037.JPG)

If you have any questions or comments, please contact me.

Brad Wilson
Centex Rooney Construction Company



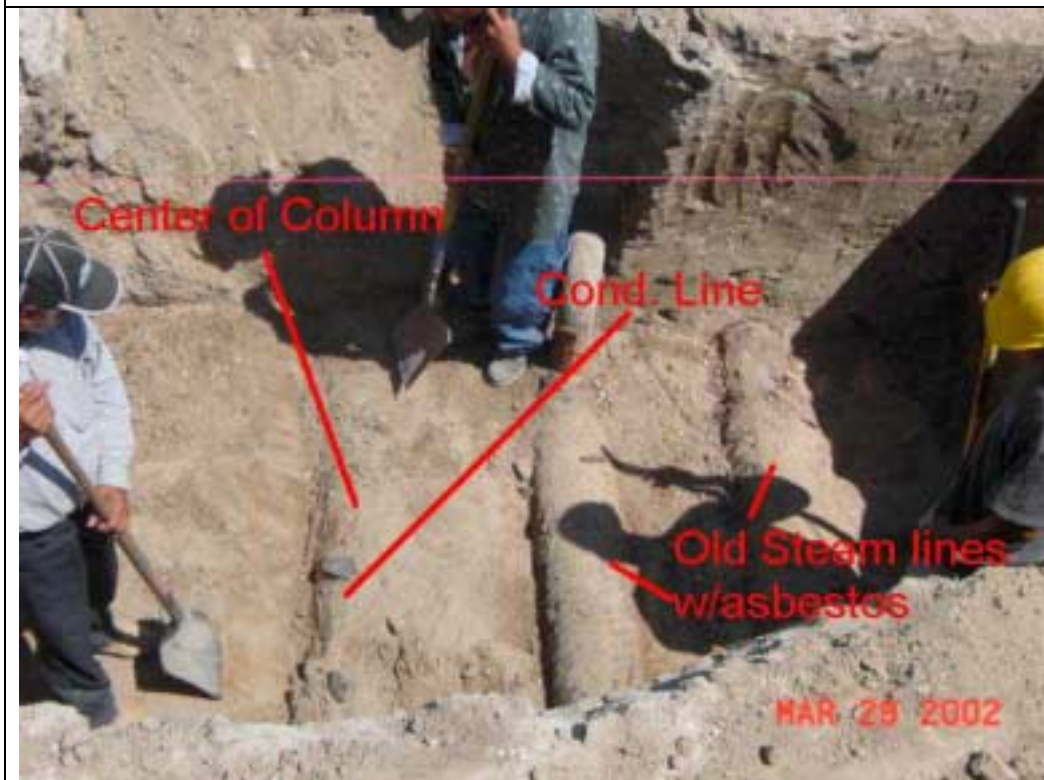
K to B line.JPG



Welding at Moment connection.JPG



Steam Line Conflict.JPG



A2Pad looking East.jpg



Mech. Room Roof Framing.JPG



Low Beam 2.JPG



Tree Trimming.JPG



DSC00037.JPG