

M.E. RINKER, ST. HALL
 SCHOOL OF BUILDING CONSTRUCTION
 UNIVERSITY OF FLORIDA-GAINESVILLE
 PROJECT NO. BR-191

**CROXTON COLLABORATIVE/
 GOULD EVANS ASSOCIATES**
 CROXTON COLLABORATIVE ARCHITECTS
 475 5TH AVENUE
 NEW YORK, NY 10017
 TEL. 212.683.1988
 FAX. 212.683.1978

GOULD EVANS ASSOCIATES
 5405 WEST CYPRESS STREET
 TAMPA, FL 33607
 TEL. 813.281.1075
 FAX. 813.288.0221

LEPA ASSOCIATES
 120 WEST 30TH STREET
 NEW YORK, NY 10001-4052
 TEL. 212.245.1100
 FAX. 212.245.1100

WALTER P. MADRE
 200 EAST GENESEE BOULEVARD
 TAMPA, FL 33602
 TEL. 813.221.2424
 FAX. 813.221.2289

BROWN & COLLIER, INC.
 3520 NW 43 STREET
 GAINESVILLE, FL 32605
 TEL. 352.375.8899
 FAX. 352.375.8800

MCCANN DESIGN GROUP, INC.
 1843 NW 30 DRIVE
 SUITE 200
 GAINESVILLE, FL 32608
 TEL. 352.372.2888
 FAX. 352.372.8822

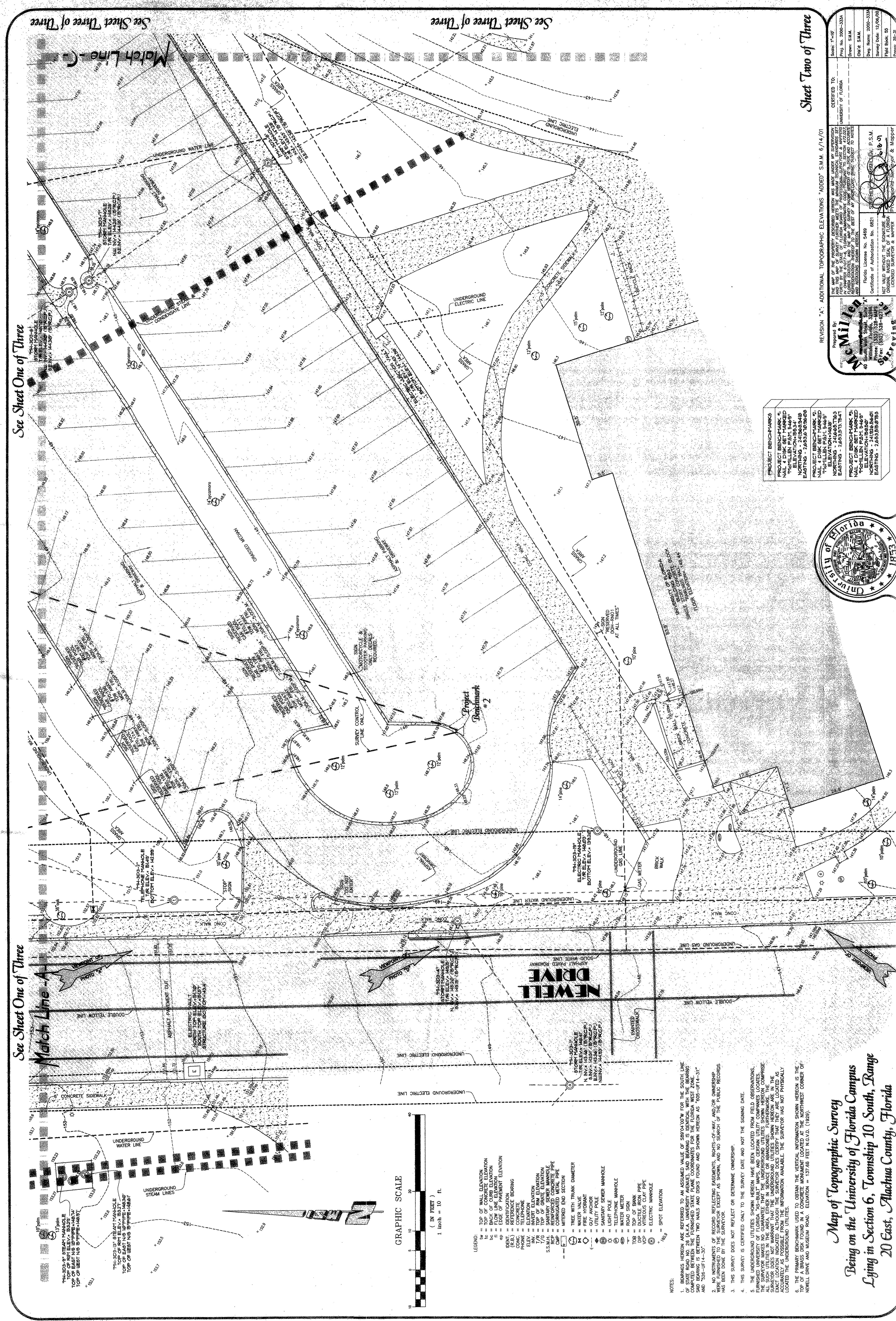
SEEV-883CH
 14550 E. ZIMMERMAN STR. 118
 NORWALK, GEORGIA
 TEL. 901.759.90.99
 FAX. 901.759.98.05

THIS DRAWING, AS AN INSTRUMENT OF SERVICE, IS AND SHALL REMAIN THE PROPERTY OF SEEV-883CH. IT IS TO BE USED ONLY FOR THE PROJECT AND SITE SPECIFICALLY IDENTIFIED HEREON. IT IS NOT TO BE REPRODUCED, COPIED, OR USED IN ANY MANNER WITHOUT THE WRITTEN PERMISSION OF SEEV-883CH. SEEV-883CH ASSUMES NO LIABILITY FOR ANY ERRORS OR OMISSIONS IN THIS DRAWING. SEEV-883CH ASSOCIATES

RECEIVED
 UCT 27 2008
 DEPARTMENT OF CIVIL ENGINEERING
 UNIVERSITY OF FLORIDA

**SITE/SITE UTILITIES
 CONSTRUCTION
 DOCUMENTS**

SURVEY
 DATE: 10/19/01
 SCALE: 1" = 20'-0"
 DRAWN BY: MM/JRAE
TS200

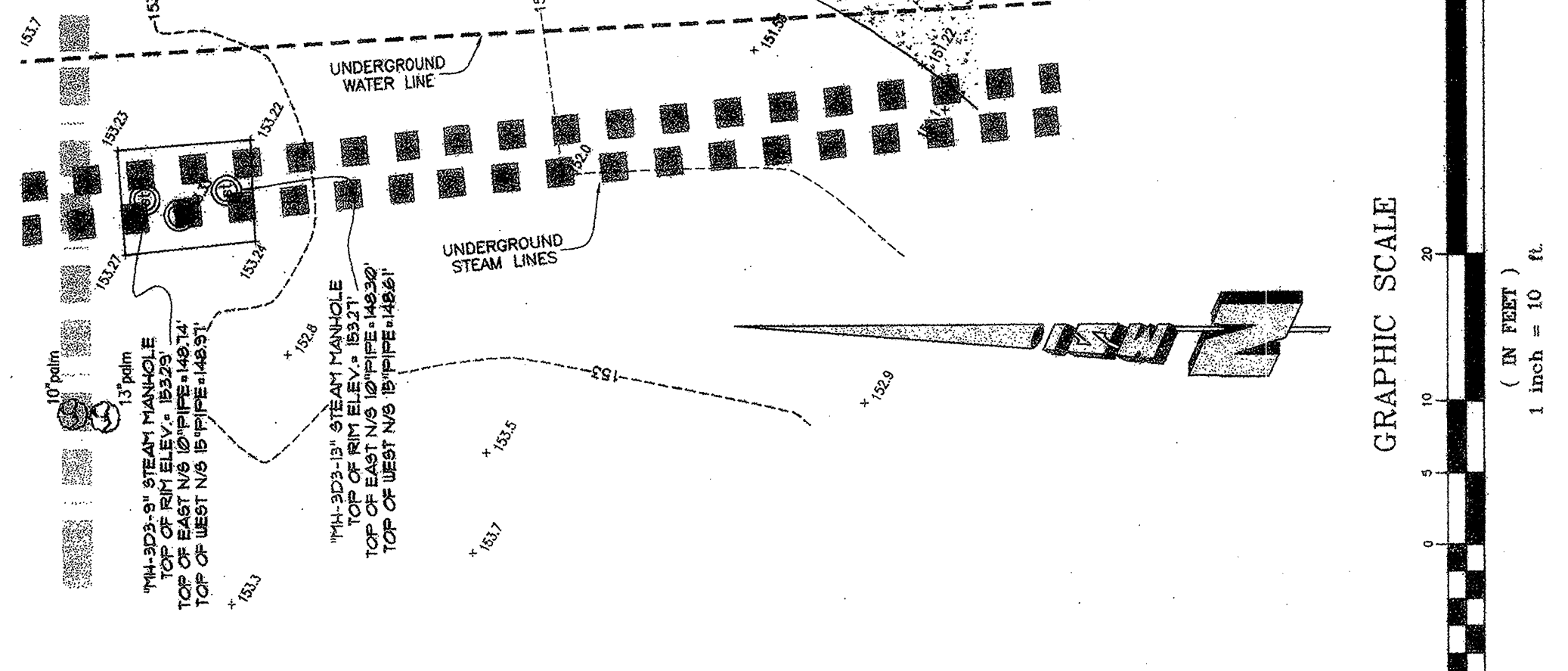


See Sheet One of Three

See Sheet One of Three

See Sheet Three of Three

Sheet Two of Three



- LEGEND:**
- 1x = TOP OF WALL ELEVATION
 - 1x = TOP OF CONCRETE ELEVATION
 - 1x = TOP OF FINISH FLOOR ELEVATION
 - 1x = TOP OF PAVEMENT ELEVATION
 - 1x = EDGE OF PAVEMENT ELEVATION
 - 1x = REFERENCE BEARING
 - 1x = TELEPHONE
 - 1x = ELEVATION
 - 1x = TOP OF FINISH FLOOR ELEVATION
 - 1x = TOP OF FINISH FLOOR ELEVATION
 - 1x = SANITARY SEWER MANHOLE
 - 1x = CORRUGATED METAL PIPE
 - 1x = METERED END SECTION
 - 1x = TREE WITH TRUNK DIAMETER
 - 1x = GUY ANCHOR
 - 1x = FIRE HYDRANT
 - 1x = SANITARY SEWER MANHOLE
 - 1x = LIGHT POLE
 - 1x = WATER MANHOLE
 - 1x = ROAD SIGN
 - 1x = DUCTILE IRON PIPE
 - 1x = VITREOUS CLAY PIPE
 - 1x = ELECTRIC MANHOLE
 - 1x = SPOT ELEVATION

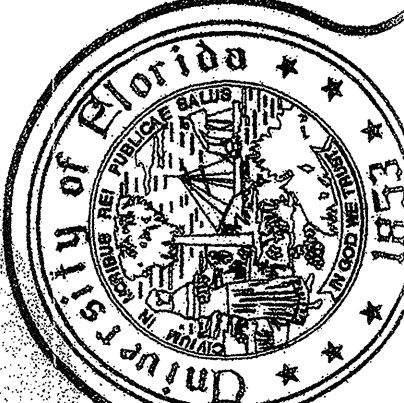
NOTES:

1. BEARINGS HEREON ARE REFERRED TO AN ASSUMED VALUE OF SKEWTON FOR THE SOUTH LINE OF NEWELL DRIVE. THE BEARING IS 127° 46' 12" N 137° 46' 12" W. THE BEARING COMPUTED BETWEEN THE FURNISHED STATE PLANE COORDINATES FOR THE FLORIDA WEST ZONE AND THE ASSUMED VALUE OF SKEWTON IS 127° 46' 12" N 137° 46' 12" W.
2. THIS SURVEY DOES NOT REFLECT OR DETERMINE OWNERSHIP.
3. THE SURVEY IS CERTIFIED ONLY TO THE SURVEY DATE AND NOT THE DRAWING DATE.
4. THE UNDERGROUND UTILITIES SHOWN HEREON HAVE BEEN LOCATED FROM FIELD OBSERVATIONS. THE SURVEYOR MAKES NO GUARANTEE THAT THE UNDERGROUND UTILITIES SHOWN HEREON COMPRISE ALL UTILITIES. THE SURVEYOR DOES NOT WARRANT THAT THE UNDERGROUND UTILITIES SHOWN HEREON ARE IN THE ACCURACY AS POSSIBLE FROM THE INFORMATION AVAILABLE. THE SURVEYOR HAS NOT PHYSICALLY LOCATED THE UNDERGROUND UTILITIES.
5. THE PRIMARY BENCHMARK USED TO OBTAIN THE VERTICAL INFORMATION SHOWN HEREON IS THE NEWELL DRIVE AND MUSEUM ROAD. ELEVATION = 127.46 FEET N.G.D. (1989).

*Map of Topographic Survey
 Being on the University of Florida Campus
 Lying in Section 6, Township 10 South, Range
 20 East, Alachua County, Florida*

PROJECT BENCHMARKS:

PROJECT BENCHMARK 1	"TULLER P21 1-449"	NORTHING - 748937.7841	EASTING - 748937.7841
PROJECT BENCHMARK 2	"TULLER P21 1-449"	NORTHING - 748937.7841	EASTING - 748937.7841
PROJECT BENCHMARK 3	"TULLER P21 1-449"	NORTHING - 748937.7841	EASTING - 748937.7841
PROJECT BENCHMARK 4	"TULLER P21 1-449"	NORTHING - 748937.7841	EASTING - 748937.7841



REVISION "A" - ADDITIONAL TOPOGRAPHIC ELEVATIONS ADDED S.M.M. 6/14/01

Prepared By: *Michael J. Rinker*
 Checked By: *Michael J. Rinker*
 Drawn By: *Michael J. Rinker*
 Date: 10/19/01
 Scale: 1" = 20'-0"
 Project No. 2000-033A
 Sheet No. 2000-033A
 Date: 10/19/01
 Survey Date: 12/09/00
 Plate Book: 95
 Page: 28-31