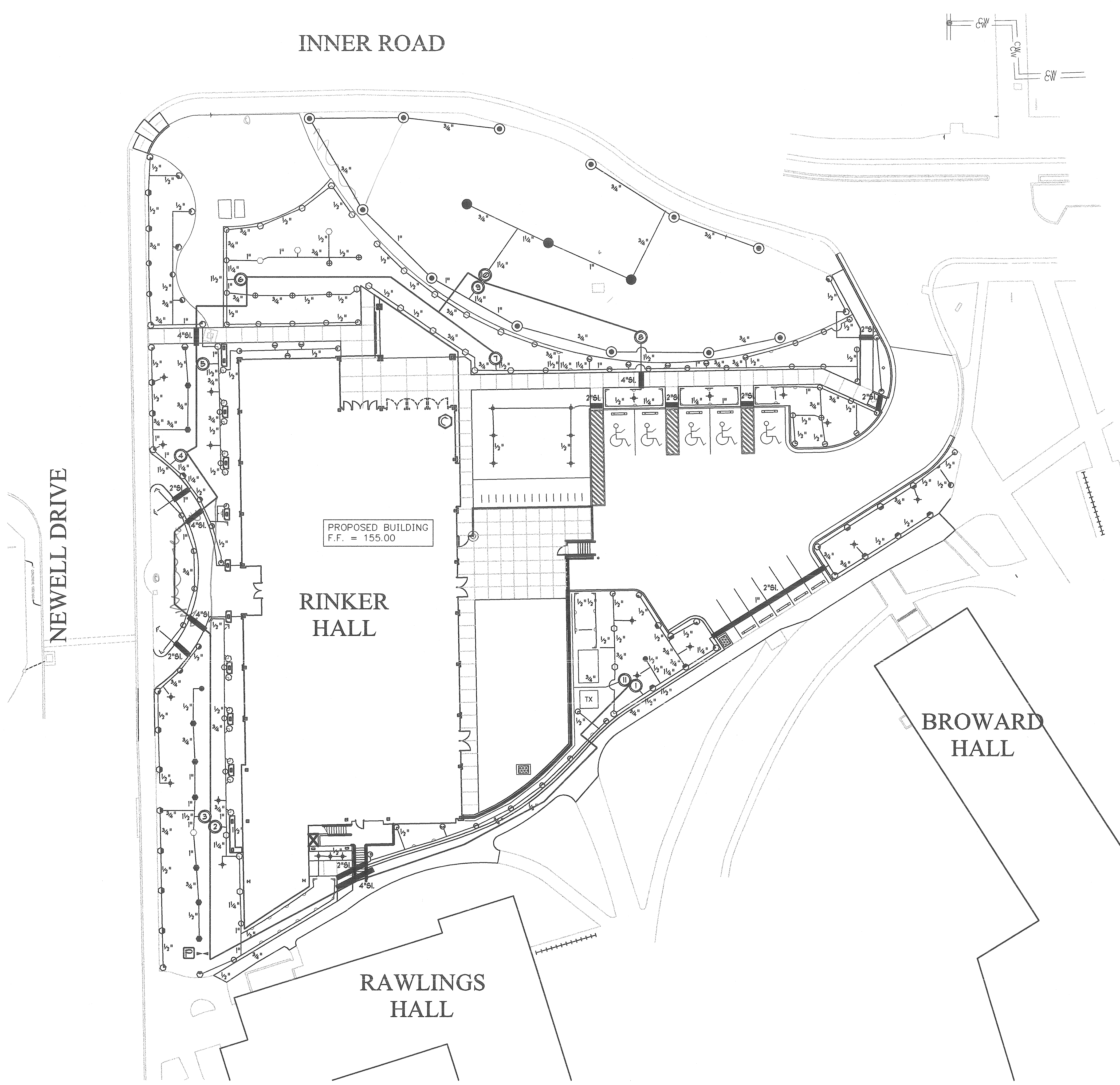


M.E. RINKER, Sr. HALL
SCHOOL OF BUILDING CONSTRUCTION

UNIVERSITY OF FLORIDA-GAINESVILLE
PROJECT NO. BR-191



IRRIGATION PLAN

ARCHITECTS
CROXTON COLLABORATIVE/
GOULD EVANS ASSOCIATES

CROXTON COLLABORATIVE ARCHITECTS
475 FIFTH AVENUE
NEW YORK, NY 10017
TEL. 212.683.1888
FAX 212.683.2789

GOULD EVANS ASSOCIATES
5405 WEST CYPRESS STREET
TAMPA, FL 33607
TEL. 813.288.0729
FAX 813.288.0231

MECHANICAL ENGINEERS
LEHR ASSOCIATES
130 WEST 30TH STREET
NEW YORK, NY 10001-4092
TEL. 212.947.8650
FAX 212.947.2959

STRUCTURAL ENGINEERS
WALTER P. MOORE
201 EAST KENNEDY BOULEVARD
TAMPA, FL 33602
TEL. 813.221.2424
FAX 813.221.2289

CIVIL ENGINEERS
BROWN & CULLEN, INC.
3530 HWY 43 STREET
GAINESVILLE, FL 32605
TEL. 352.375.8999
FAX 352.375.0833

LANDSCAPE ENGINEERS
McCLAIN DESIGN GROUP, INC.
1843 NW 38 DRIVE
GAINESVILLE, FL 32605
TEL. 352.372.2808
FAX 352.372.8822

CONSULTANTS
SEEGY-BISCH
AUSSERE SULZBACHER STR. 118
MUNSTER, GERMANY
TEL. 0511/59 98 98
FAX 0511/59 98 05

THIS DRAWING, AS AN INSTRUMENT OF SERVICE, IS AND SHALL REMAIN PROPERTY OF CROXTON COLLABORATIVE ARCHITECTS. THIS DRAWING SHALL NOT BE REPRODUCED, PUBLISHED, USED ON OTHER PROJECTS, USED FOR ADVERTISEMENTS, OR USED IN CONNECTION WITH THIS PROJECT BY OTHERS EXCEPT BY AGREEMENT IN WRITING. © 2001 CROXTON COLLABORATIVE ARCHITECTS/GOULD EVANS ASSOCIATES.

NO. 0532/REVISION DATE

100% CONSTRUCTION DOCUMENTS

IRRIGATION PLAN

DATE 11/21/01
SCALE 1"=20'-0"
DRAWN BY/CHECKED BY JHB

McCLAIN DESIGN GROUP, INC.
LANDSCAPE ARCHITECTURAL AND GRAPHIC SERVICES
GAINESVILLE, FLORIDA EMAIL: MDTREE@AOL.COM
FAX: (352) 372-6622 PHONE: (352) 372-2808

McClain
11/19/01

I-101