



M.E. RINKER, Sr. HALL
SCHOOL OF BUILDING CONSTRUCTION

UNIVERSITY OF FLORIDA-GAINESVILLE
PROJECT NO. BR-191

ARCHITECTS
**CROXTON COLLABORATIVE/
GOULD EVANS ASSOCIATES**

CROXTON COLLABORATIVE ARCHITECTS

475 FIFTH AVENUE
NEW YORK, NY 10017
TEL 212.683.1988
FAX 212.683.2799

GOULD EVANS ASSOCIATES
5405 WEST OPRESS STREET
TAMPA, FL 33607
TEL 813.288.0729
FAX 813.288.0231

MECHANICAL ENGINEERS
LEHR ASSOCIATES

130 WEST 30TH STREET
NEW YORK, NY 10001-4092
TEL 212.947.8050
FAX 212.967.2059

STRUCTURAL ENGINEERS
WALTER P. MOORE

201 EAST KENNEDY BOULEVARD
TAMPA, FL 33602
TEL 813.221.2424
FAX 813.221.2289

CIVIL ENGINEERS
BROWN & CULLEN, INC.

3530 NW 43 STREET
GAINESVILLE, FL 32605
TEL 352.375.8899
FAX 352.375.0833

LANDSCAPE ARCHITECTS
McCLAIN DESIGN GROUP, INC.

1843 NW 39 DRIVE
GAINESVILLE, FL 32605
TEL 352.372.2808
FAX 352.372.6622

CONSULTANT
SEEGY-BISCH

AUSSEER SULZBACHER STR. 118
NURNBERG, GERMANY
TEL 0911/59 90 99
FAX 0911/59 98 05

THIS DRAWING, AS AN INSTRUMENT OF SERVICE, IS AND SHALL REMAIN THE PROPERTY OF CROXTON COLLABORATIVE ARCHITECTS. THIS DRAWING SHALL NOT BE REPRODUCED, PUBLISHED, USED ON OTHER PROJECTS, USED FOR ADDITIONS, OR USED IN COMPLETION OF THIS PROJECT BY OTHERS EXCEPT BY AGREEMENT IN WRITING. © 2001 CROXTON COLLABORATIVE ARCHITECTS/GOULD EVANS ASSOCIATES.

NO. 0256/REVISED DATE

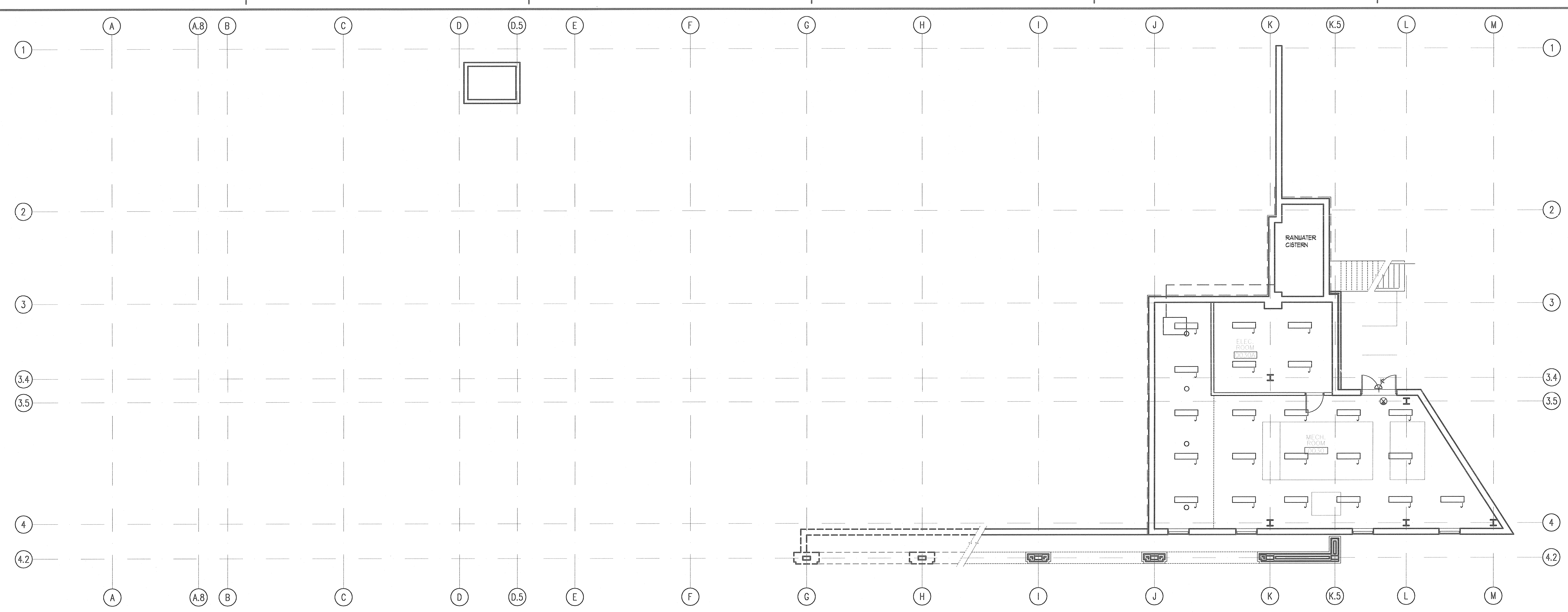
100% CONSTRUCTION DOCUMENTS

DRAWING NAME
**MECH. RM. &
1ST FLOOR
REFLECTED CEILING
PLANS**

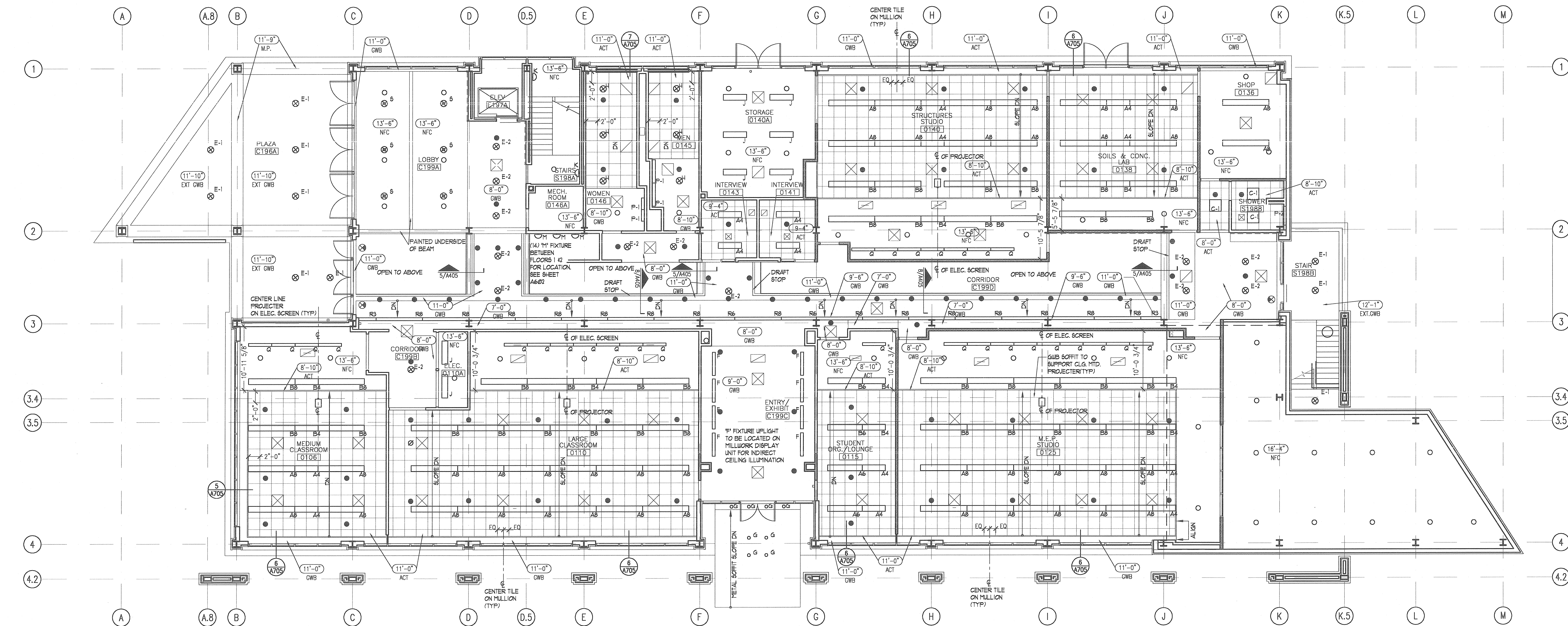
DATE 11/21/01 DRAWING NUMBER

SCALE 1/8"=1'-0" **A151**

DRAWN BY/CHECKED BY DLH



1 MECH. ROOM REFLECTED CEILING PLAN
1/8" = 1'-0"



2 FIRST FLOOR REFLECTED CEILING PLAN
1/8" = 1'-0"