



M.E. RINKER, Sr. HALL
SCHOOL OF BUILDING CONSTRUCTION
 UNIVERSITY OF FLORIDA-GAINESVILLE
 PROJECT NO. BR-191

ARCHITECTS
CROXTON COLLABORATIVE/
GOULD EVANS ASSOCIATES
 475 FIFTH AVENUE
 NEW YORK, NY 10017
 TEL. 212.683.1998
 FAX 212.683.2799

GOULD EVANS ASSOCIATES
 5405 WEST CHERRY STREET
 TAMPA, FL 33607
 TEL. 813.288.0729
 FAX 813.288.0231

MECHANICAL ENGINEERS
LEHR ASSOCIATES
 130 WEST 30TH STREET
 NEW YORK, NY 10001-4092
 TEL. 212.947.8050
 FAX 212.967.2059

STRUCTURAL ENGINEERS
WALTER P. MOORE
 201 EAST KENNEDY BOULEVARD
 TAMPA, FL 33602
 TEL. 813.221.2424
 FAX 813.221.2289

CIVIL ENGINEERS
BROWN & CULLEN, INC.
 3530 NW 43 STREET
 GAINESVILLE, FL 32605
 TEL. 352.375.8999
 FAX 352.375.0833

LANDSCAPE ARCHITECTS
McCLAIN DESIGN GROUP, INC.
 1543 NW 39 DRIVE
 GAINESVILLE, FL 32605
 TEL. 352.372.2808
 FAX 352.372.6622

CONSULTANT
SEEGY-BISCH
 AUSSERE SUZBACHER STR. 118
 NURNBERG, GERMANY
 TEL. 0911/59 99 99
 FAX 0911/59 98 05

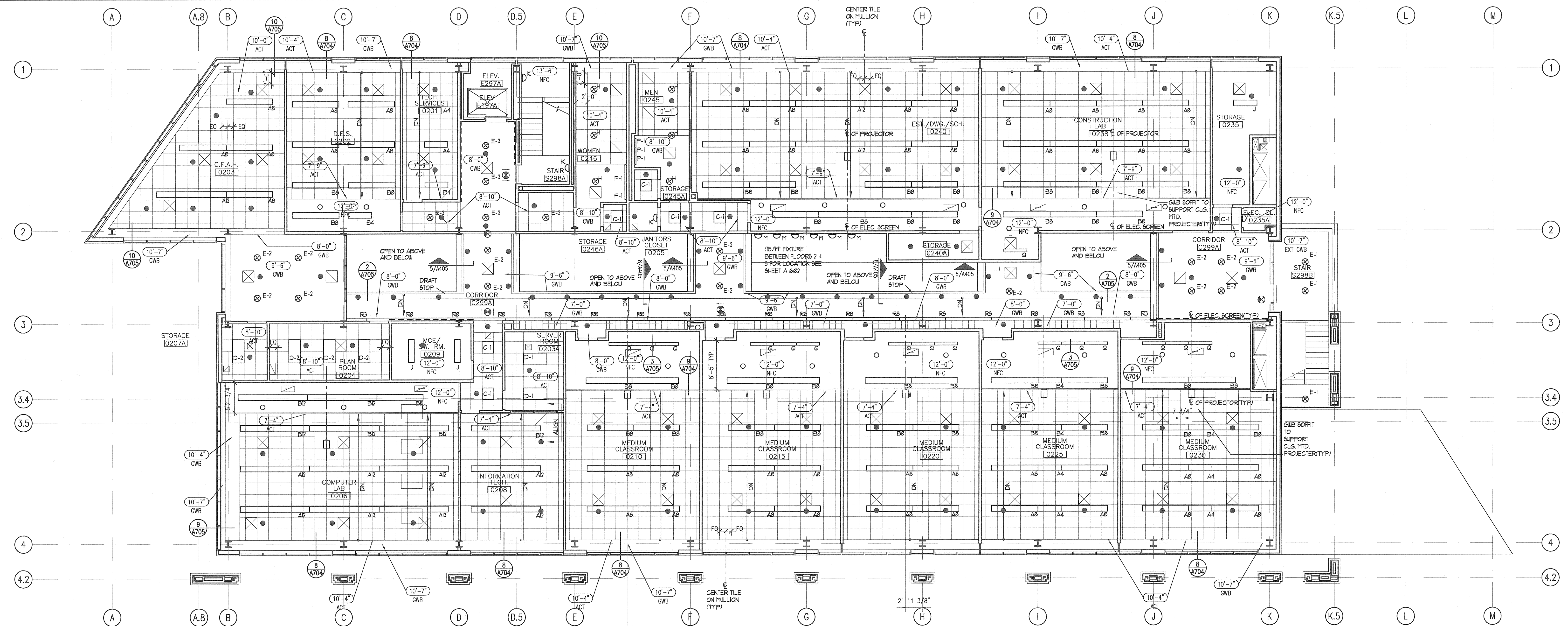
THIS DRAWING, AS AN INSTRUMENT OF SERVICE, IS AND SHALL REMAIN THE PROPERTY OF CROXTON COLLABORATIVE ARCHITECTS. THIS DRAWING SHALL NOT BE REPRODUCED, PUBLISHED, USED ON OTHER PROJECTS, USED FOR ADVERTISEMENTS, OR USED IN COMPLETION OF THIS PROJECT BY OTHERS WITHOUT THE WRITTEN AGREEMENT IN WRITING OF CROXTON COLLABORATIVE ARCHITECTS AND GOULD EVANS ASSOCIATES.

NO. / ISSUE/REVISION DATE

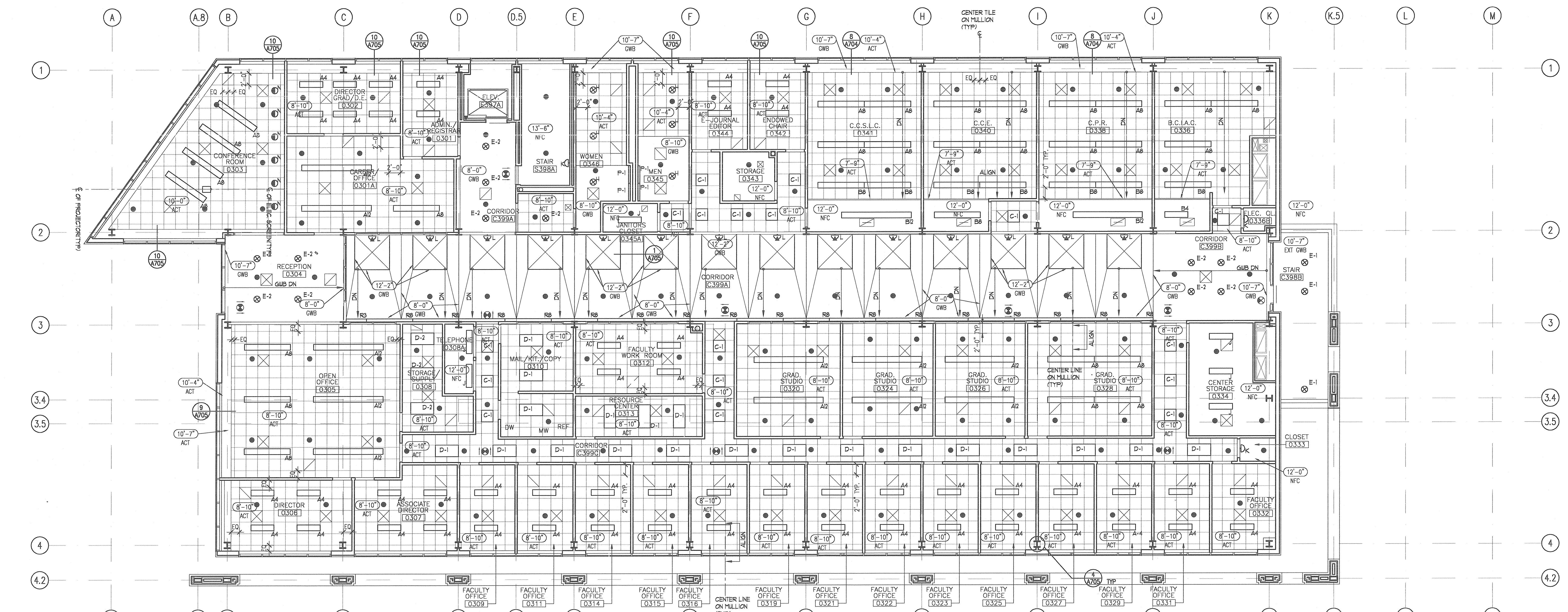
100% CONSTRUCTION DOCUMENTS

DRAWING NAME
2ND & 3RD FLOOR REFLECTED CEILING PLAN

DATE 11/21/01
 SCALE 1/8" = 1'-0"
 DRAWN BY/ CHECKED BY
 DLH



2 SECOND FLOOR REFLECTED CEILING PLAN
 1/8" = 1'-0"



1 THIRD FLOOR REFLECTED CEILING PLAN
 1/8" = 1'-0"