

**M.E. RINKER, Sr. HALL**  
SCHOOL OF BUILDING CONSTRUCTION  
UNIVERSITY OF FLORIDA-GAINESVILLE  
PROJECT NO. BR-191

ARCHITECTS  
**CROXTON COLLABORATIVE/  
GOULD EVANS ASSOCIATES**

CROXTON COLLABORATIVE ARCHITECTS  
475 FIFTH AVENUE  
NEW YORK, NY 10017  
TEL. 212.683.1998  
FAX 212.683.2799

GOULD EVANS ASSOCIATES  
5405 WEST CYPRESS STREET  
TAMPA, FL 33607  
TEL. 813.288.0729  
FAX 813.288.0231

MECHANICAL ENGINEERS  
**LEHR ASSOCIATES**  
130 WEST 30TH STREET  
NEW YORK, NY 10001-4092  
TEL. 212.947.8050  
FAX 212.967.2059

STRUCTURAL ENGINEERS  
**WALTER P. MOORE**  
201 EAST KENNEDY BOULEVARD  
TAMPA, FL 33602  
TEL. 813.221.2424  
FAX 813.221.2289

CIVIL ENGINEERS  
**BROWN & CULLEN, INC.**  
3530 HWY 43 STREET  
GAINESVILLE, FL 32605  
TEL. 352.375.8999  
FAX 352.375.0633

LANDSCAPE ARCHITECTS  
**McCLAIN DESIGN GROUP, INC.**  
1843 NW 39 DRIVE  
GAINESVILLE, FL 32605  
TEL. 352.372.2805  
FAX 352.372.8922

CONSULTANT  
**SEEDY-BISCH**  
AUSSEPER, SULZBACHER STR. 118  
MUNSTER, GERMANY  
TEL. 0911/59 90 99  
FAX 0911/59 98 05

THIS DRAWING, AS AN INSTRUMENT OF SERVICE, IS AND SHALL REMAIN, PROPERTY OF CROXTON COLLABORATIVE ARCHITECTS. THIS DRAWING SHALL NOT BE REPRODUCED, PUBLISHED, USED ON OTHER PROJECTS, USED FOR ADVERTISING, OR USED IN COMPLETION OF THIS PROJECT BY OTHERS EXCEPT BY AGREEMENT IN WRITING.  
© 2001 CROXTON COLLABORATIVE ARCHITECTS/GOULD EVANS ASSOCIATES

NO. ISSUE/REVISION DATE

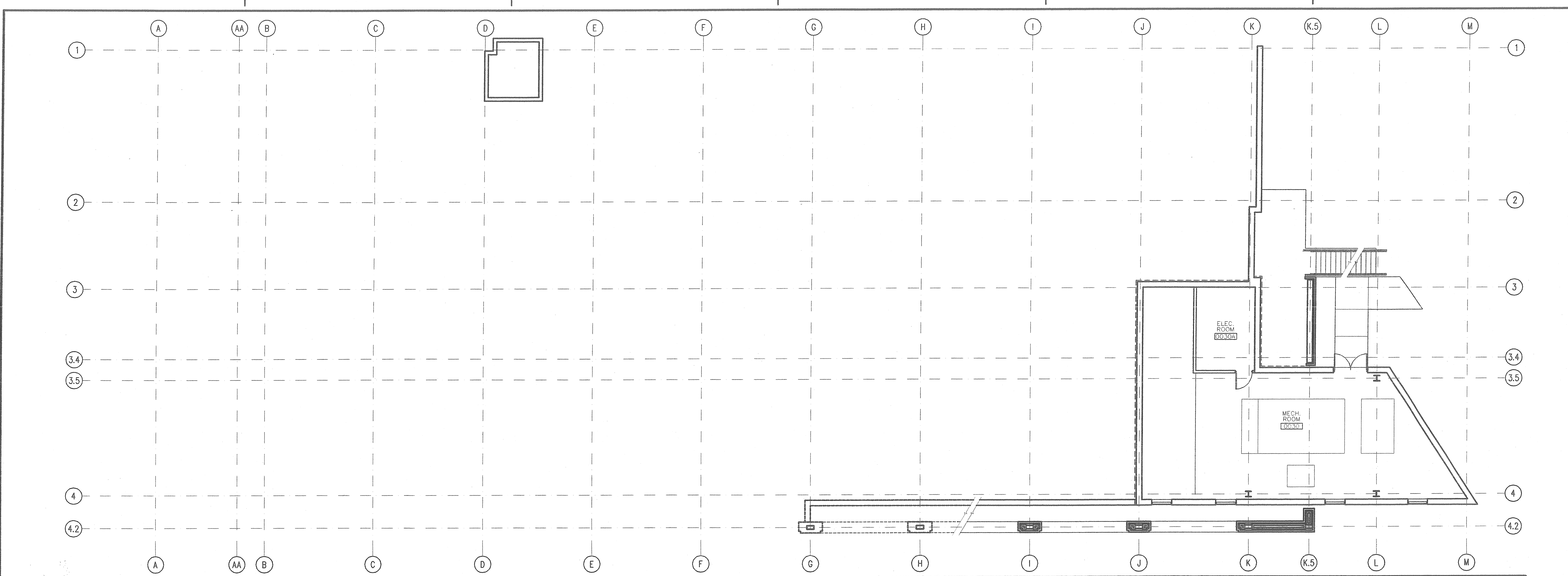
**100% CONSTRUCTION DOCUMENTS**

DRAWING NAME  
**RADON PROTECTION MECHANICAL LEVEL & FIRST FLOOR PLAN**

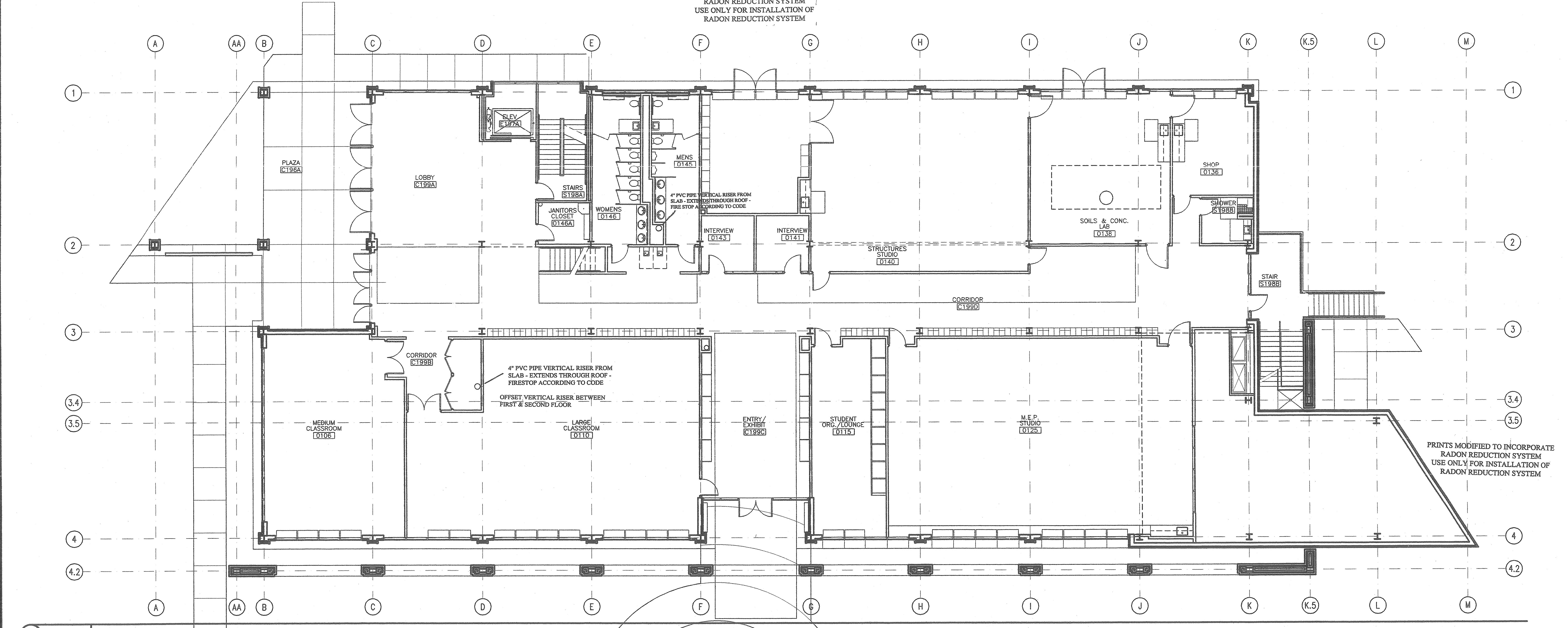
DATE: DRAWING NUMBER:

SCALE: **RP102**

DRAWN BY/DESIGNED BY:



**1** 1/8"=1'-0" RADON PROTECTION MECHANICAL LEVEL PLAN



**2** 1/8"=1'-0" RADON PROTECTION FIRST FLOOR PLAN