



**M.E. RINKER, Sr. HALL**  
SCHOOL OF BUILDING CONSTRUCTION  
UNIVERSITY OF FLORIDA-GAINESVILLE  
PROJECT NO. BR-191

ARCHITECTS  
**CROXTON COLLABORATIVE/**  
**GOULD EVANS ASSOCIATES**  
CROXTON COLLABORATIVE ARCHITECTS  
475 FIFTH AVENUE  
NEW YORK, NY 10017  
TEL 212.683.1998  
FAX 212.683.2799

GOULD EVANS ASSOCIATES  
5405 WEST CYPRESS STREET  
TAMPA, FL 33607  
TEL 813.288.0729  
FAX 212.967.2059

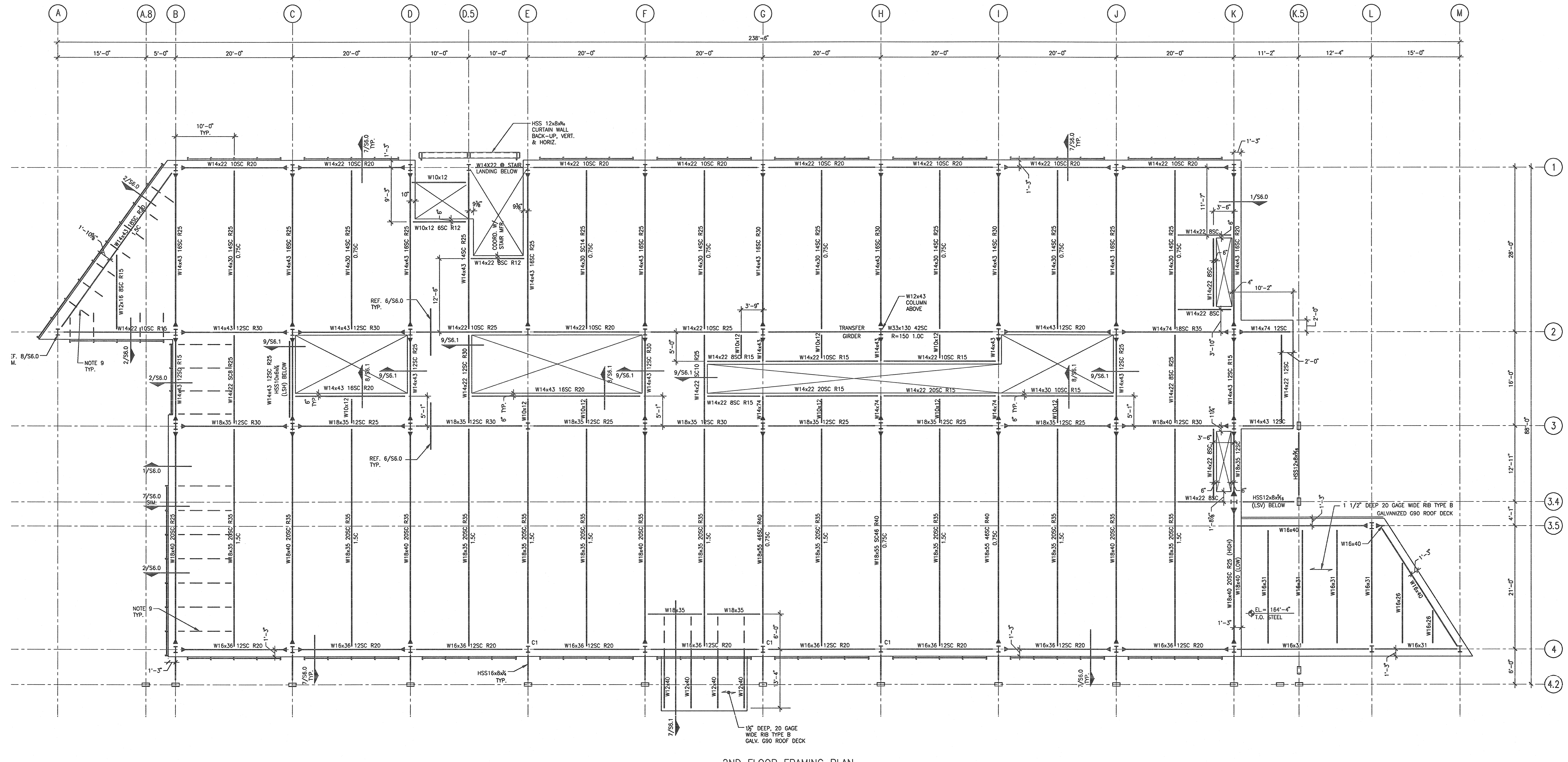
MECHANICAL ENGINEERS  
**LEHR ASSOCIATES**  
130 WEST 30TH STREET  
NEW YORK, NY 10001-4092  
TEL 212.947.8050  
FAX 212.967.2059

STRUCTURAL ENGINEERS  
**WALTER P. MOORE AND ASSOCIATES, INC.**  
Florida Engineering Business No. 3818  
201 EAST KENNEDY BOULEVARD  
TAMPA, FL 33602  
TEL 813.221.2424  
FAX 813.221.2289

CIVIL ENGINEERS  
**BROWN & CULLEN, INC.**  
3530 NW 43 STREET  
GAINESVILLE, FL 32605  
TEL 352.375.8999  
FAX 352.375.8933

LANDSCAPE ENGINEERS  
**McCLAIN DESIGN GROUP, INC.**  
1843 NW 39 DRIVE  
GAINESVILLE, FL 32605  
TEL 352.372.2808  
FAX 352.375.6622

CONSULTANT  
**SEEGY-BISCH**  
AUSSERE SULZBACHER STR. 118  
NURNBERG, GERMANY  
TEL 0911/59 90 99  
FAX 0911/59 98 05



2ND FLOOR FRAMING PLAN

1 1/8"=1'-0" PLAN

- FLOOR NOTES:
- FLOOR SYSTEM CONSISTS OF 2 1/2" OF NORMAL- WEIGHT CONCRETE OVER 5" 20 GAGE GALVANIZED COMPOSITE METAL DECK WITH A G60 COATING, UNLESS NOTED OTHERWISE.
  - THE SLAB SHALL BE REINFORCED WITH 6 x 6 / W2.9 x W2.9 W.W.F. PROVIDE #4 x 8'-0" @ 12" O.C. ALONG EACH GIRDER. SEE TYPICAL DETAILS.
  - PROVIDE 1/4" BENT PLATE WITH 1/2" x 8" HEADED STUDS AT 2'-0" O.C. AT ALL EDGE OF SLAB CONDITIONS. SEE DETAILS FOR MORE INFORMATION.
  - INDICATES COMPLETE PENETRATION MOMENT WELD.
  - xxSC INDICATES NUMBER OF 3/4" x 5" HEADED STUDS.
  - x.xC INDICATES MAGNITUDE OF BEAM CAMBER IN INCHES.
  - FORCES SHOWN ARE FOR CONNECTION DESIGN.
  - k = FACTORED SHEAR FORCE IN KIPS
  - REFER TO M.E.P. DRAWINGS FOR OPENINGS NOT SHOWN. OPENING SIZES ARE NOT FINAL AND MUST BE CONFIRMED WITH M.E.P. DRAWINGS. REFER TO ARCHITECTURAL DRAWINGS FOR DIMENSIONS NOT SHOWN. SEE DETAILS FOR MORE INFORMATION.
  - PROVIDE BOTTOM FLANGE BRACE AT EACH VERTICAL WALL SUPPORT CHANNEL. REF. 18/56.0 FOR DETAIL.
  - TOP OF STEEL ELEVATIONS, UNLESS NOTED OTHERWISE:  
2ND FLOOR = +168'-6 1/2"  
3RD FLOOR = +181'-0 1/2"

2 NONE FLOOR NOTES PLAN NOTES

100% CONSTRUCTION DOCUMENTS

DRAWING NAME  
**2ND FLOOR FRAME PLAN**

DATE 11-21-01  
SCALE AS NOTED **S2.0**  
DRAWN BY/CHECKED BY LMR/JLD