



M.E. RINKER, SR. HALL
SCHOOL OF BUILDING CONSTRUCTION
UNIVERSITY OF FLORIDA-GAINESVILLE
PROJECT NO. BR-191

ARCHITECTS
**CROXTON COLLABORATIVE/
GOULD EVANS ASSOCIATES**

CROXTON COLLABORATIVE ARCHITECTS
475 FIFTH AVENUE
NEW YORK, NY 10017
TEL 212.683.1998
FAX 212.683.2799

GOULD EVANS ASSOCIATES
5405 WEST CYPRESS STREET
TAMPA, FL 33607
TEL 813.288.0729
FAX 813.288.0231

MECHANICAL ENGINEERS
LEHR ASSOCIATES

130 WEST 30TH STREET
NEW YORK, NY 10001-4092
TEL 212.947.8050
FAX 212.967.2059

STRUCTURAL ENGINEERS
WALTER P. MOORE AND ASSOCIATES, INC.
Florida Engineering License No. 3263
201 EAST KENNEDY BOULEVARD
TAMPA, FL 33602
TEL 813.221.2424
FAX 813.221.2289

CIVIL ENGINEERS
BROWN & CULLEN, INC.
3530 NW 43 STREET
GAINESVILLE, FL 32605
TEL 352.375.8999
FAX 352.375.0833

LANDSCAPE ARCHITECTS
McCLAIN DESIGN GROUP, INC.
1843 NW 39 DRIVE
GAINESVILLE, FL 32605
TEL 352.372.2806
FAX 352.375.6622

CONSULTANT
SEEGY-BISCH
AUSSERE SULZBACHER STR. 118
NURNBERG, GERMANY
TEL 0911/59 90 99
FAX 0911/59 98 95

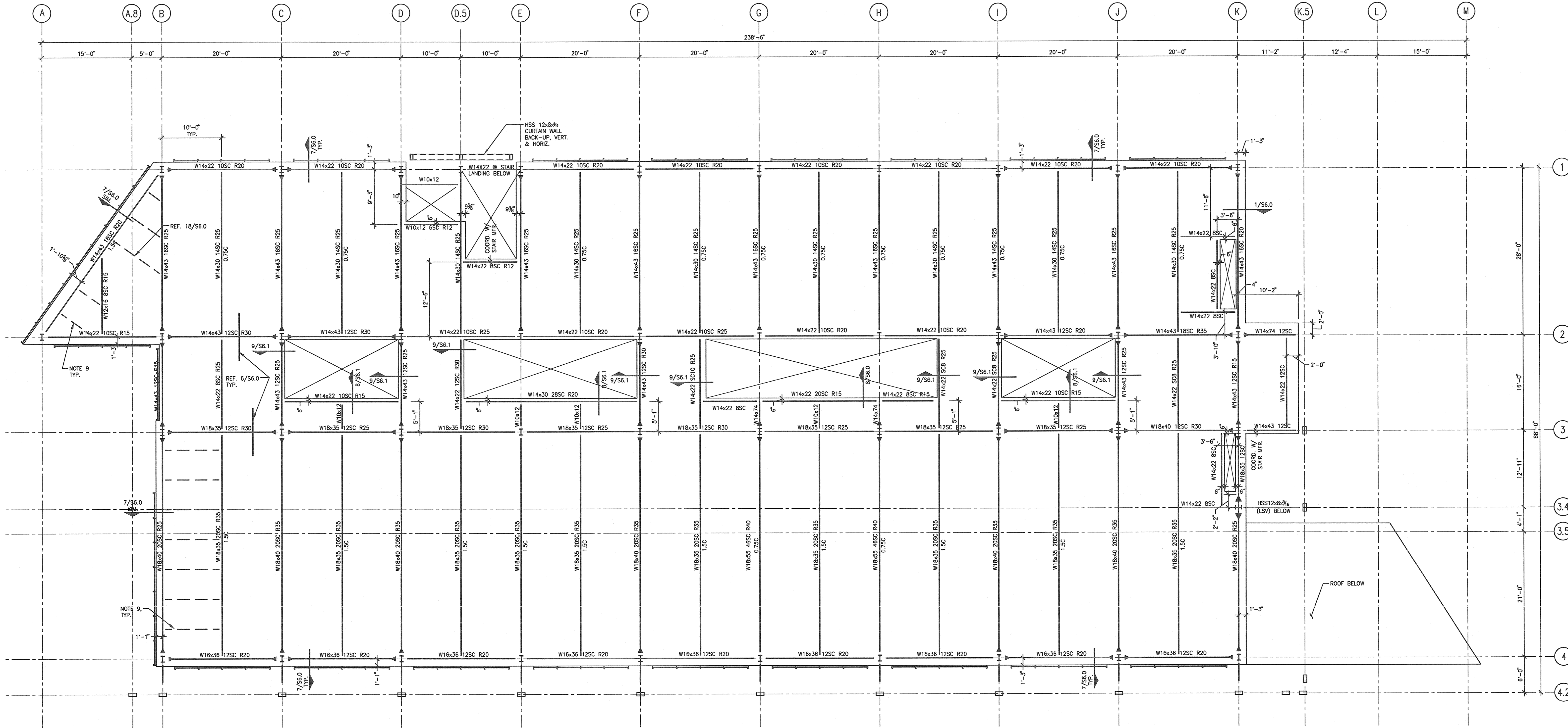
THIS DRAWING IS AN INSTRUMENT OF SERVICE AND SHALL REMAIN THE PROPERTY OF CROXTON COLLABORATIVE ARCHITECTS. THIS DRAWING SHALL NOT BE REPRODUCED, PUBLISHED, USED ON OTHER PROJECTS, USED FOR ADDITIONS, OR USED IN COMPLETION OF THIS PROJECT BY OTHERS EXCEPT BY AGREEMENT IN WRITING. © 2007 CROXTON COLLABORATIVE ARCHITECTS/GOULD EVANS ASSOCIATES.

NO. 1554/REVISED DATE

100% CONSTRUCTION DOCUMENTS

3RD FLOOR FRAME PLAN

DATE 11-21-01
SCALE AS NOTED **S3.0**
DRAWN BY/CHECKED BY LMR/JLD



3RD FLOOR FRAMING PLAN

1 1/8"=1'-0" PLAN

- FLOOR NOTES:**
- FLOOR SYSTEM CONSISTS OF 2 1/2" OF NORMAL-WEIGHT CONCRETE OVER 5" GAGE GALVANIZED COMPOSITE METAL DECK WITH A G60 COATING, UNLESS NOTED OTHERWISE.
 - THE SLAB SHALL BE REINFORCED WITH 6 x 6 / W2.9 x W2.9 W.W.F. PROVIDE #4 x 8'-0" @ 12" O.C. ALONG EACH GIRDER. SEE TYPICAL DETAILS.
 - PROVIDE 1/4" BENT PLATE WITH 1/2" x 8" HEADED STUDS AT 2'-0" O.C. AT ALL EDGE OF SLAB CONDITIONS. SEE DETAILS FOR MORE INFORMATION.
 - INDICATES COMPLETE PENETRATION WELD.
 - xxSC INDICATES NUMBER OF 3/4" x 5" HEADED STUDS.
 - x.c INDICATES MAGNITUDE OF BEAM CAMBER IN INCHES.
 - FORCES SHOWN ARE FOR CONNECTION DESIGN:
k = FACTORED SHEAR FORCE IN KIPS
 - REFER TO M.E.P. DRAWINGS FOR OPENINGS NOT SHOWN. OPENING SIZES ARE NOT FINAL AND MUST BE CONFIRMED WITH M.E.P. DRAWINGS. REFER TO ARCHITECTURAL DRAWINGS FOR DIMENSIONS NOT SHOWN. SEE DETAILS FOR MORE INFORMATION.
 - PROVIDE BOTTOM FLANGE BRACE AT EACH VERTICAL WALL SUPPORT CHANNEL, REF. 18/S6.0 FOR DETAIL.
 - TOP OF STEEL ELEVATIONS, UNLESS NOTED OTHERWISE:
2ND FLOOR = +168'-6 1/2"
3RD FLOOR = +181'-0 1/2"

2 NONE FLOOR NOTES PLAN NOTES