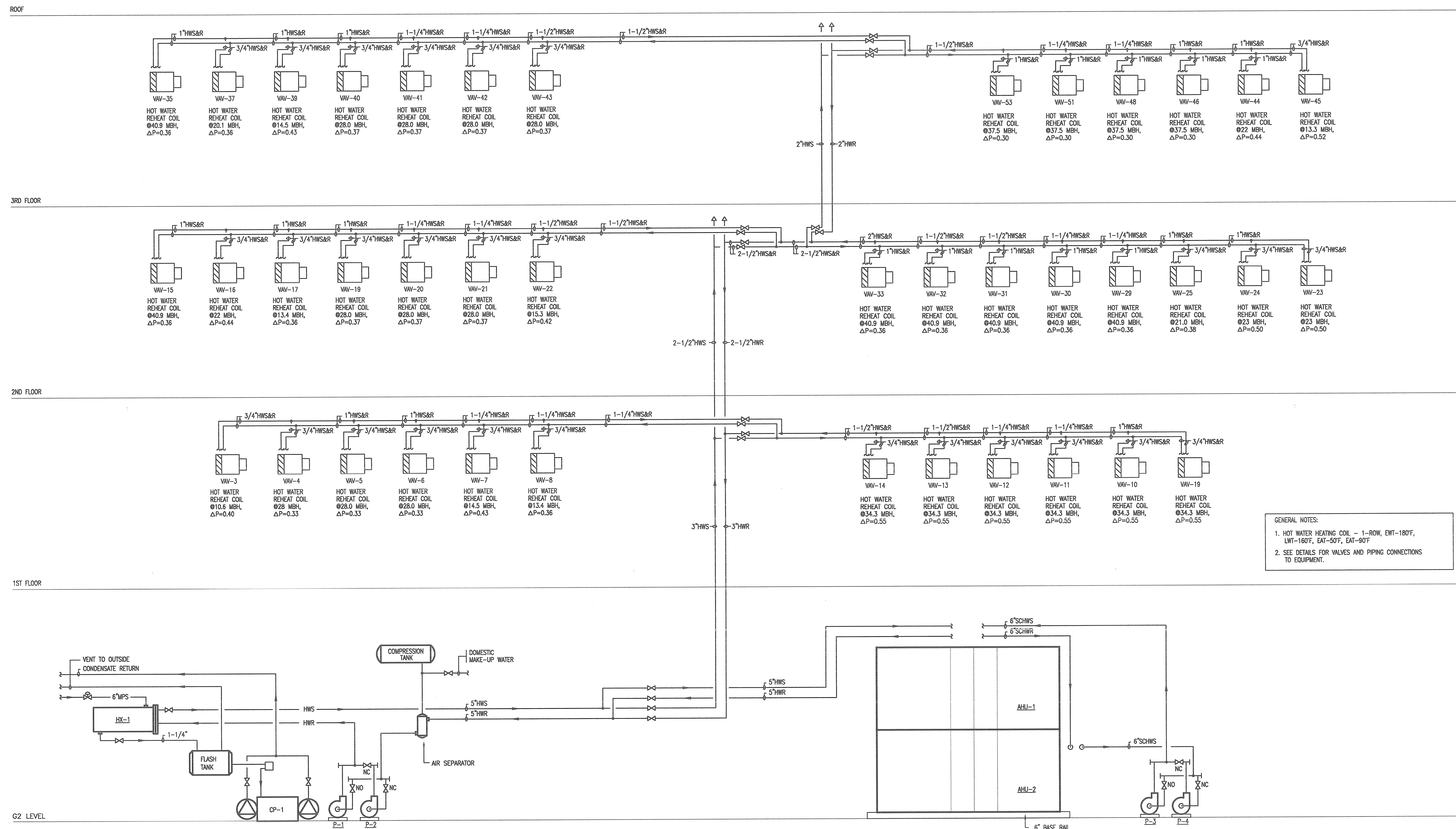


**M.E. RINKER, Sr. HALL**  
SCHOOL OF BUILDING CONSTRUCTION

UNIVERSITY OF FLORIDA-GAINESVILLE  
PROJECT NO. BR-191



GENERAL NOTES:  
1. HOT WATER HEATING COIL - 1-ROW, ENT-180F, LWT-180F, EAT-50F, EAT-90F  
2. SEE DETAILS FOR VALVES AND PIPING CONNECTIONS TO EQUIPMENT.

HOT WATER AND CHILLED WATER FLOW/RISER DIAGRAM  
NO SCALE

ARCHITECTS  
CROXTON COLLABORATIVE/  
GOULD EVANS ASSOCIATES

CROXTON COLLABORATIVE ARCHITECTS  
475 FIFTH AVENUE  
NEW YORK, NY 10017  
TEL: 212.683.1998  
FAX: 212.683.2799

GOULD EVANS ASSOCIATES  
5405 WEST CYPRESS STREET  
TAMPA, FL 33607  
TEL: 813.288.0729  
FAX: 813.288.0231

MECHANICAL ENGINEERS  
LEHR ASSOCIATES  
130 WEST 30TH STREET  
NEW YORK, NY 10001-4092  
TEL: 212.947.8050  
FAX: 212.967.2059

STRUCTURAL ENGINEERS  
WALTER P. MOORE  
201 EAST KENNEDY BOULEVARD  
TAMPA, FL 33602  
TEL: 813.221.2424  
FAX: 813.221.2289

CIVIL ENGINEERS  
BROWN & CULLEN, INC.  
3530 NW 43 STREET  
GAINESVILLE, FL 32605  
TEL: 352.375.8999  
FAX: 352.375.0833

LANDSCAPE ARCHITECTS  
McCLAIN DESIGN GROUP, INC.  
1843 NW 39 DRIVE  
GAINESVILLE, FL 32605  
TEL: 352.372.2808  
FAX: 352.372.6622

CONSULTANT  
SEEDY-BISCH  
AUSSERE SULZBACHER STR. 118  
MUNSTER, GERMANY  
TEL: 0911/59 90 90  
FAX: 0911/59 90 05

THIS DRAWING AS AN INSTRUMENT OF SERVICE IS AND SHALL REMAIN PROPERTY OF CROXTON COLLABORATIVE ARCHITECTS. THIS DRAWING SHALL NOT BE REPRODUCED, PUBLISHED, USED ON OTHER PROJECTS, USED FOR ADDITIONS, OR USED IN COMPLETION OF THIS PROJECT BY OTHERS EXCEPT BY AGREEMENT IN WRITING. © 2001 CROXTON COLLABORATIVE ARCHITECTS/GOULD EVANS ASSOCIATES.

NO. ISSUE/REVISION DATE

100% CONSTRUCTION DOCUMENTS

DRAWING NAME  
MECHANICAL  
HOT WATER RISER  
DIAGRAM

DATE 11.21.01  
SCALE NTS  
DRAWN BY/CHECKED BY MM

