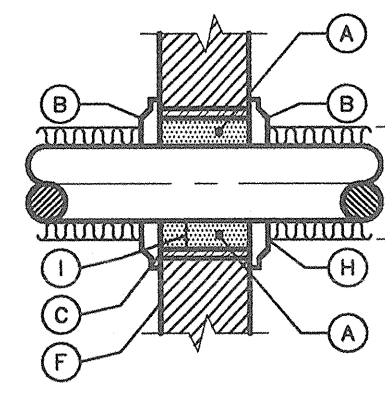
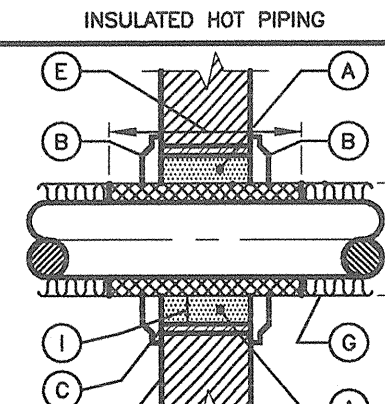


- (A) PACK ALL SPACES FULL DEPTH W/ MINERAL WOOL OR OTHER EQUALLY APPROVED FIRE RESISTIVE MATERIAL. (ASBESTOS OR FIBERGLASS SHALL NOT BE USED) FIRE RESISTANT FOAM SEALANT CHASE FOAM CTC P2-850(N.Y.C. MSA 59-79 M1 & 11) MAY BE USED. INSTALLATION AS PER MANUFACTURER.



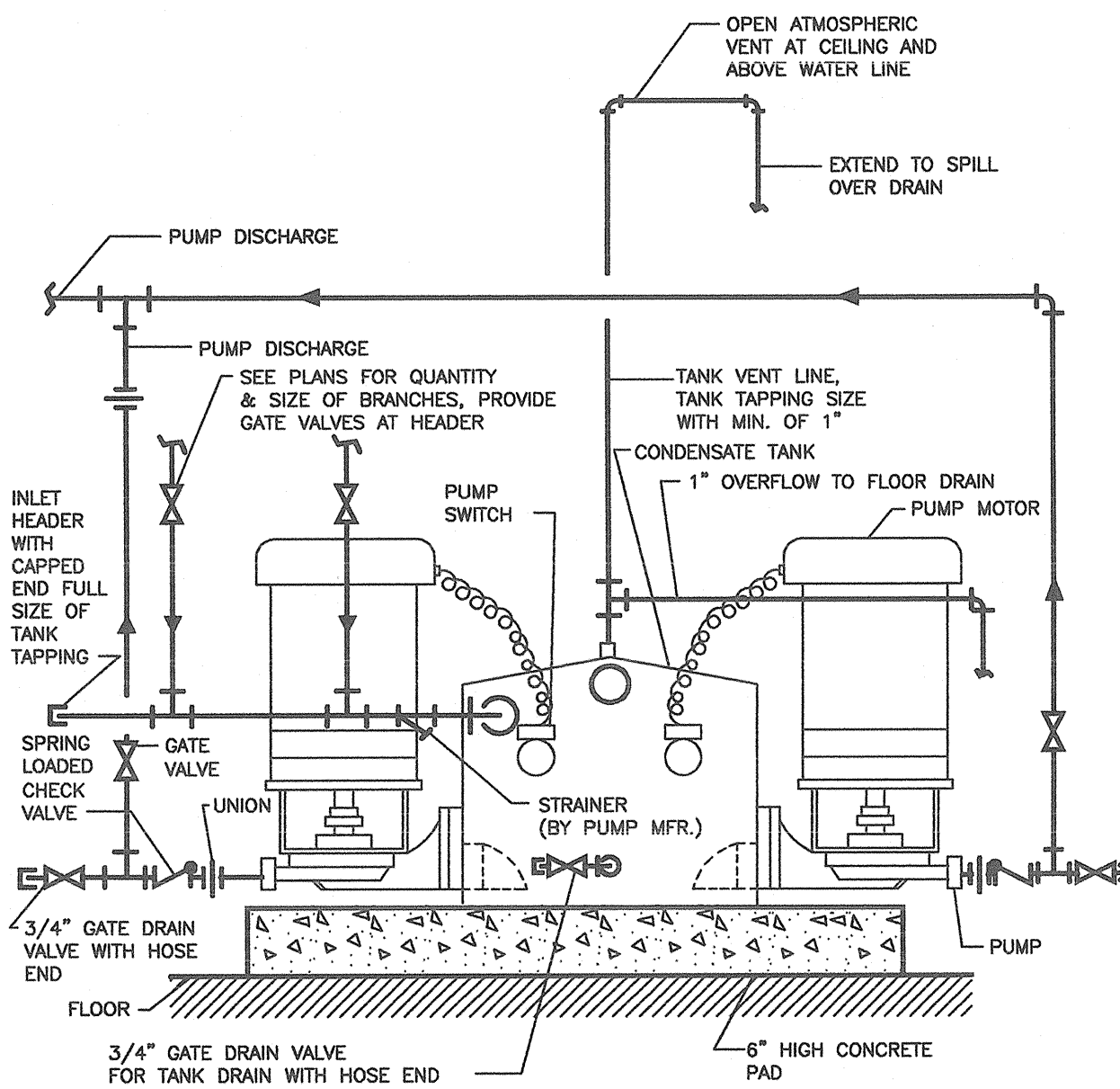
- (B) ESOUTCHEON BOTH SIDES.
(C) SLEEVE
(D) INSULATION (OUTSIDE DIAMETER)
(E) ANHYDROUS CALCIUM SILICATE INSULATION THRU SLEEVE.
(F) FIRE RATED PARTITION, WALL OR FLOOR.
(G) FIBERGLASS INSULATION AT ESOUTCHEON
(H) TERMINATE INSULATION AT ESOUTCHEON
(I) MAXIMUM 1/2" CLEARANCE BETWEEN INSIDE OF SLEEVE & PIPE.



- (J) INSULATED COLD PIPING & INSULATED HOT PIPING (ABOVE 160°F)

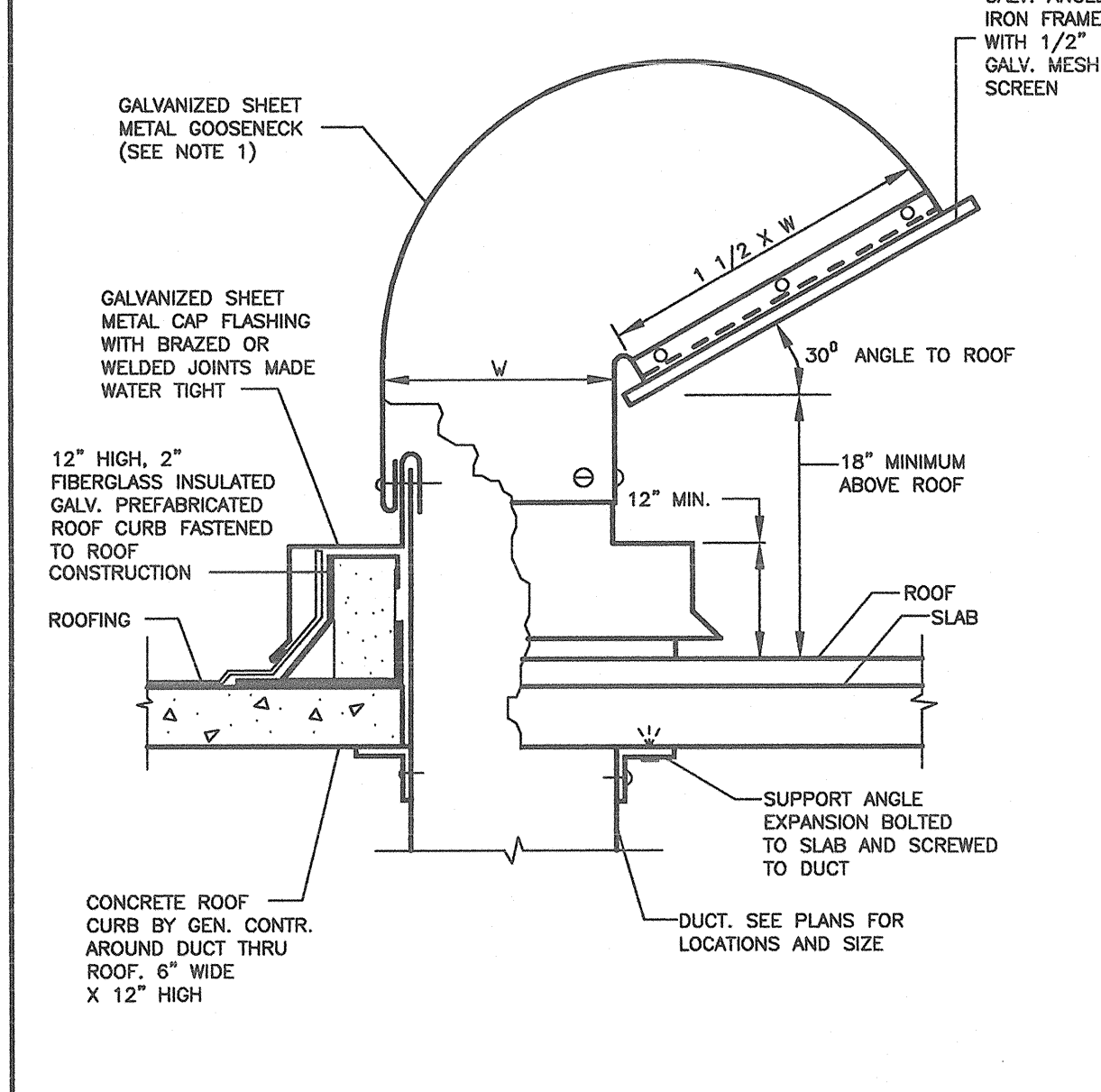
DETAIL OF PIPING PIERCING FIRE RATED PARTITIONS, WALLS & FLOORS.

NOT TO SCALE



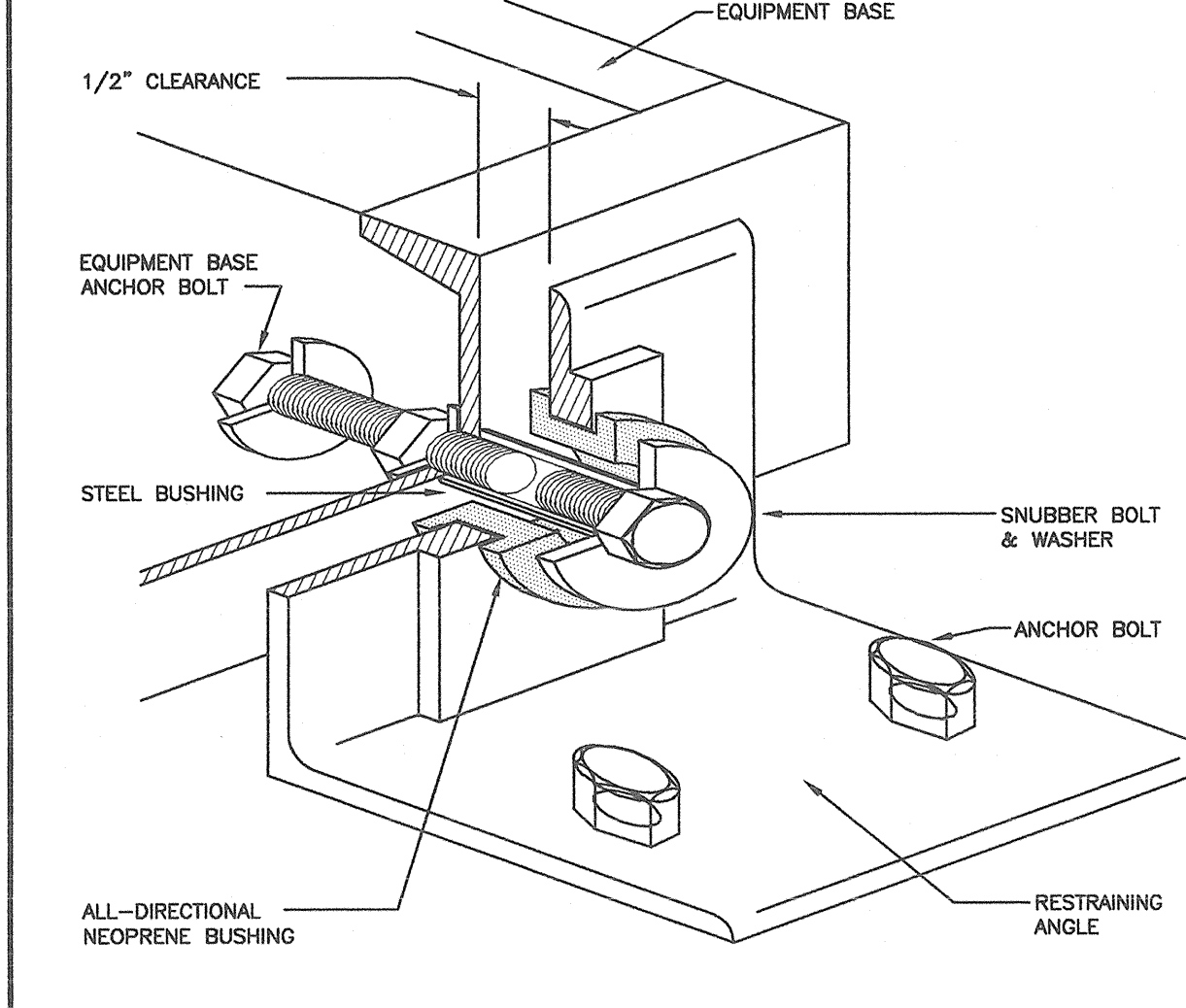
CONDENSATE PUMP PIPING

NOT TO SCALE



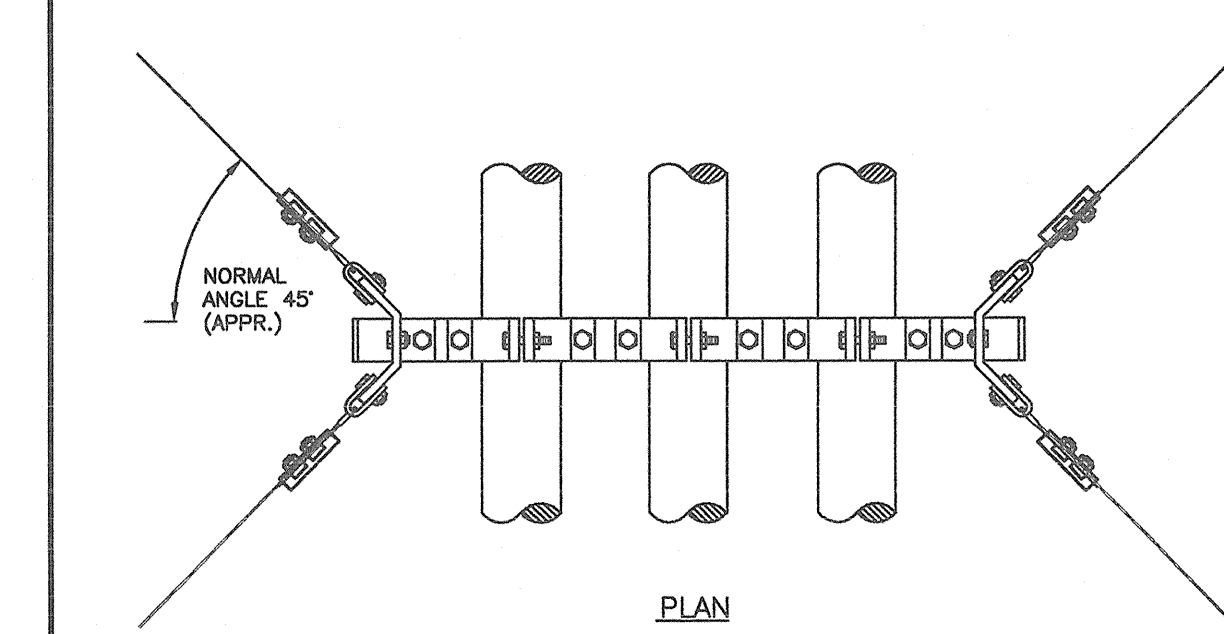
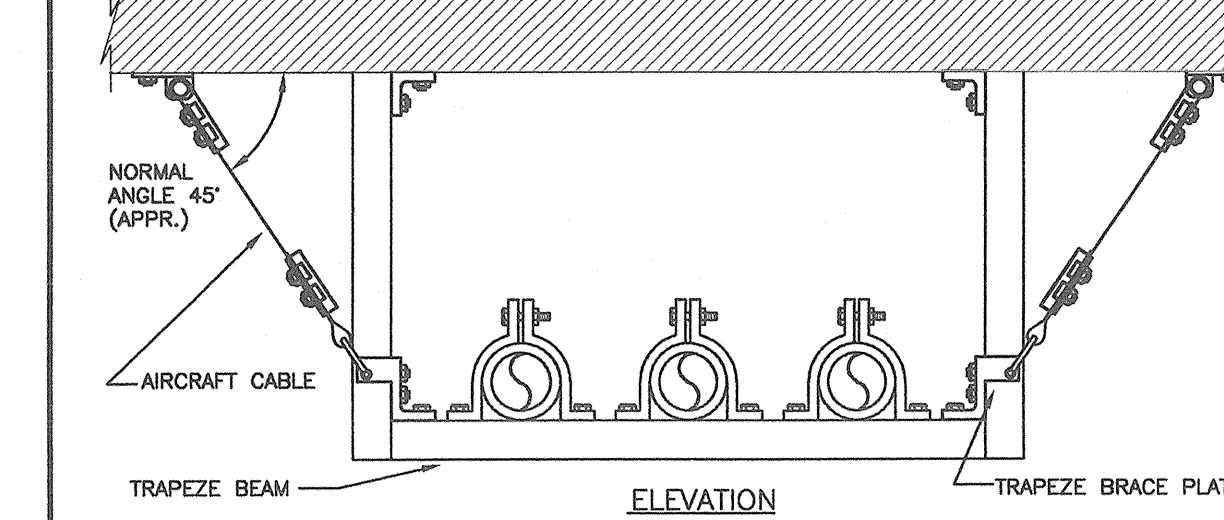
GOOSENECK

NOTES:
ALL JOINTS SHALL BE PAINTED WITH ZINC CHROMATE, INCLUDING BRAZED/WELDED JOINTS OR RAW ENDS OF DUCT WORK OR ANGLES, BY SHEET METAL FABRICATOR.



ALL-DIRECTIONAL SEISMIC SNUBBER

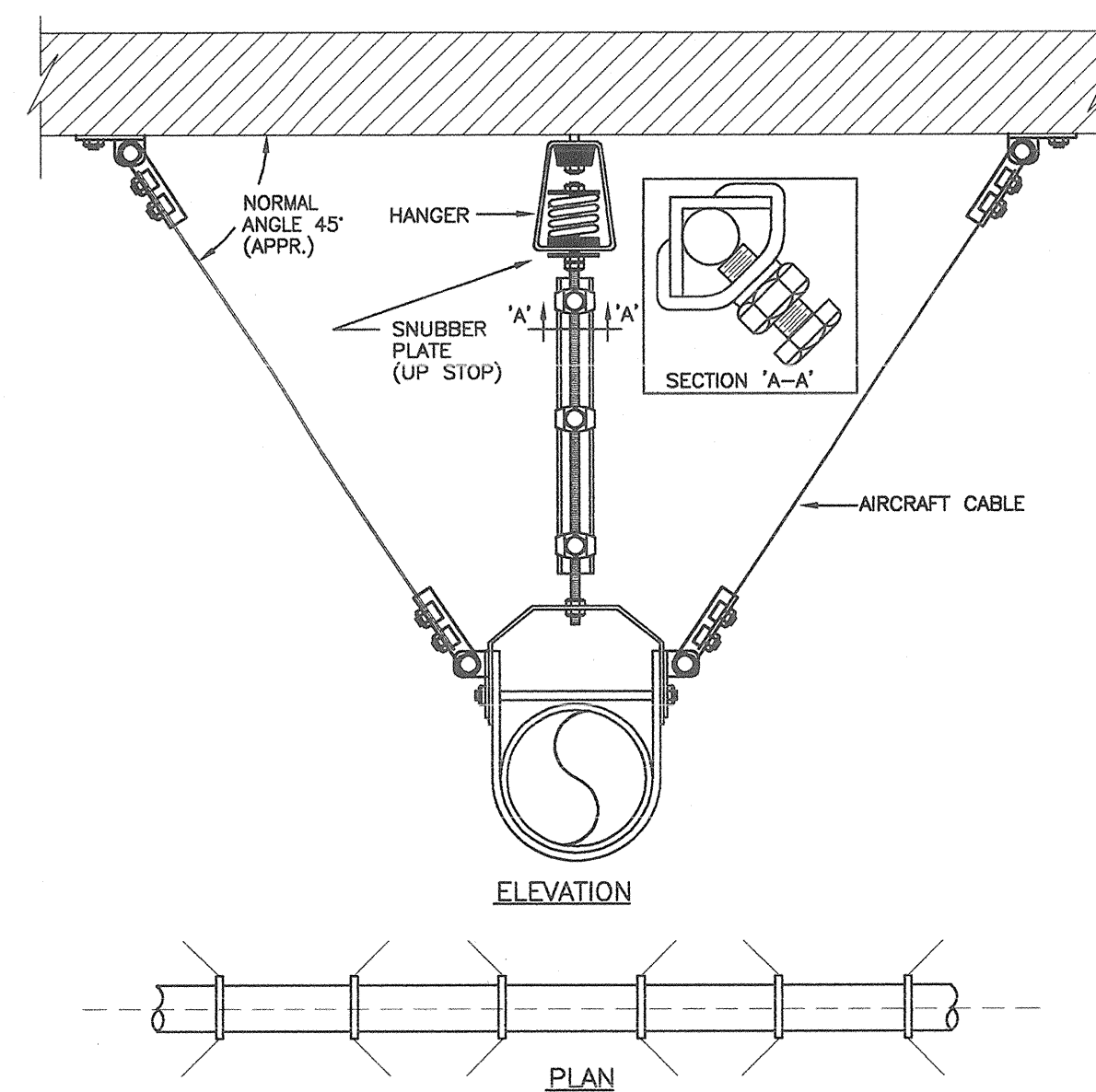
NOT TO SCALE



SEISMIC RESTRAINT FOR SUSPENDED PIPE TRAY

NOT TO SCALE

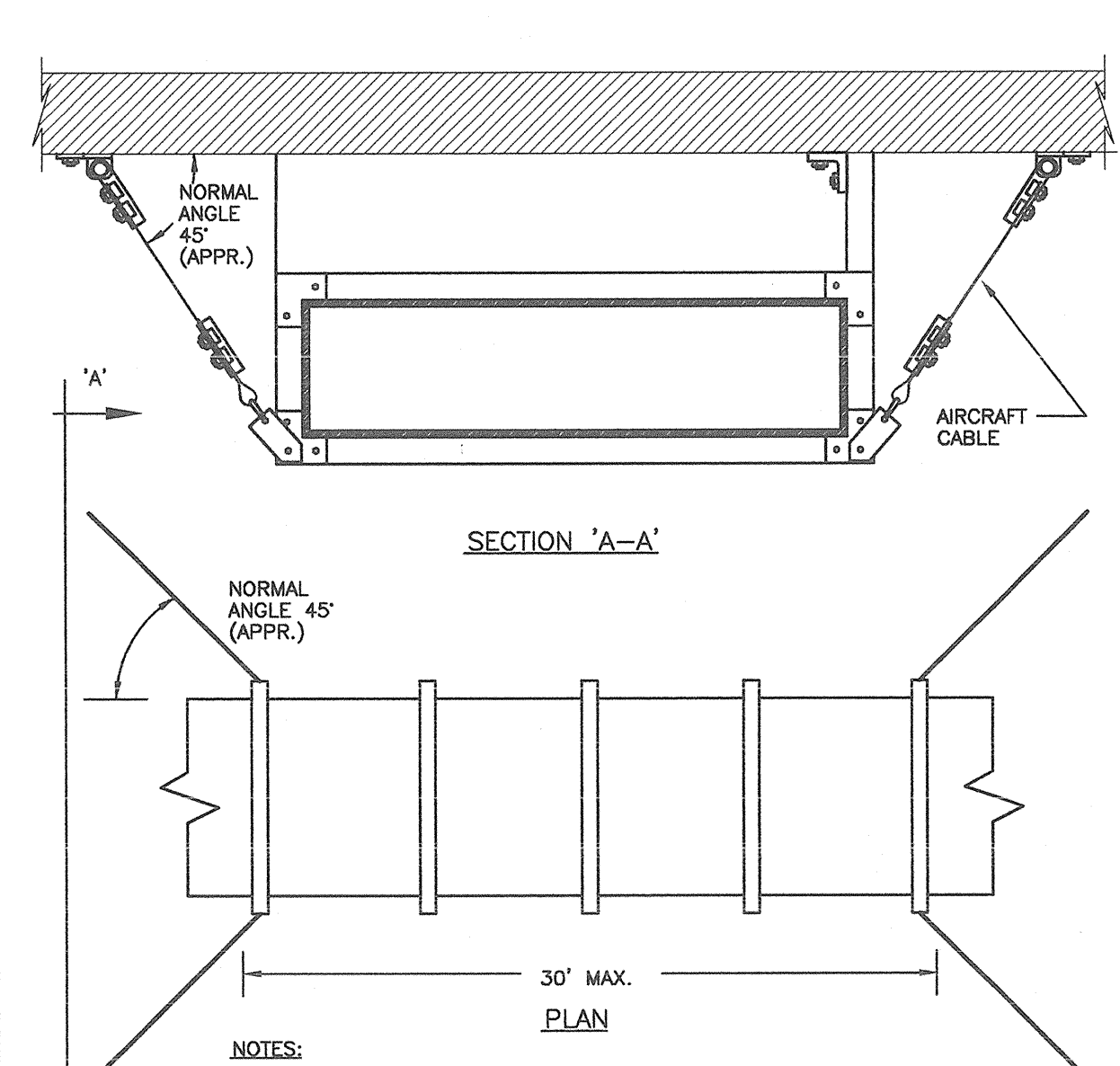
- NOTES:
1. SPACING OF SEISMIC RESTRAINTS ARE NOT TO EXCEED 40'-0".



SEISMIC RESTRAINT FOR SUSPENDED PIPE

NOT TO SCALE

- NOTES:
1. PIPING TO BE RESTRAINED AS PER 1987 BOCA CODE
2. SEISMIC RESTRAINT CABLES TO BE AT 45° ANGLES TO PIPE AXIS AND TO CEILING ALTERNATING CABLE DIRECTION TO PROVIDE AXIAL, LATERAL & DOWNWARD RESTRAINT.
3. SEISMIC RESTRAINT IS NOT REQUIRED IF TOP OF PIPE IS 12" OR LESS FROM BOTTOM OF STRUCTURAL SUPPORT POINTS.

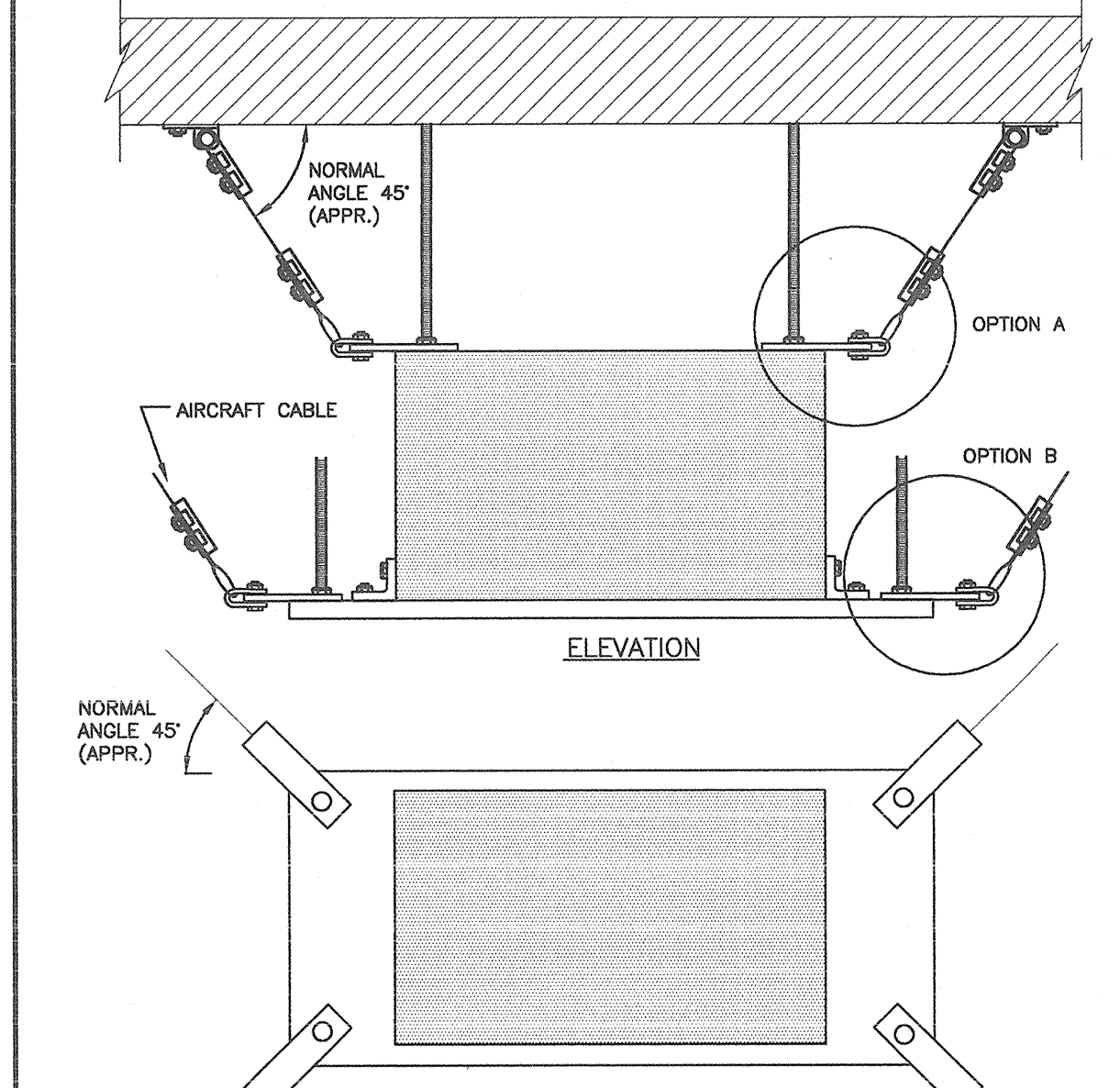


SEISMIC RESTRAINT TYPE III FOR RECTANGULAR DUCTWORK

NOT TO SCALE

- NOTES:
1. DUCTWORK TO BE RESTRAINED AS PER UNIFORM BUILDING CODE.
2. SEISMIC RESTRAINT IS NOT REQUIRED IF TOP OF DUCT IS 300 (12") OR LESS FROM BOTTOM OF STRUCTURAL SUPPORT POINT.
3. USE 3 (3/8") AIRCRAFT CABLE FOR DUCTWORK UP TO 1.3 M² (14 SQ. FT.) AND 5 (3/16") ABOVE 1.3 M² (14 SQ. FT.)

[FOR DUCTS .55 M² (6 SQ.FT.) AND ABOVE]



SEISMIC RESTRAINT FOR SUSPENDED EQUIPMENT

NOT TO SCALE

- NOTES:
1. EITHER RESTRAINT OPTION A OR B CAN BE USED DEPENDING WHETHER EQUIPMENT HAS TOP ATTACHMENT CAPABILITIES OR NOT.
2. SEISMIC RESTRAINT CABLES FOR OVERHEAD SUSPENDED UNISOLATED EQUIPMENT ARE TO BE TAUT. FOR ISOLATED SYSTEMS CABLES ARE TO BE SLACK WITH 1/2" DEFLECTION.



M.E. RINKER, Sr. HALL
SCHOOL OF BUILDING CONSTRUCTION

UNIVERSITY OF FLORIDA-GAINESVILLE
PROJECT NO. BR-191

ARCHITECTS
CROXTON COLLABORATIVE/
GOULD EVANS ASSOCIATES

CROXTON COLLABORATIVE ARCHITECTS
475 FIFTH AVENUE
NEW YORK, NY 10001
TEL 212.683.1998
FAX 212.683.2799

GOULD EVANS ASSOCIATES
5405 WEST CHERRY STREET
TAMPA, FL 33607
TEL 813.288.0729
FAX 813.288.0231

MECHANICAL ENGINEERS
LEHR ASSOCIATES
130 WEST 30TH STREET
NEW YORK, NY 10001-4092
TEL 212.947.8050
FAX 212.967.2059

STRUCTURAL ENGINEERS
WALTER P. MOORE
201 EAST KENNEDY BOULEVARD
TAMPA, FL 33602
TEL 813.221.2424
FAX 813.221.2289

CIVIL ENGINEERS
BROWN & CULLEN, INC.
3530 NW 43 STREET
GAINESVILLE, FL 32605
TEL 352.375.8999
FAX 352.375.0833

LANDSCAPE ARCHITECTS
McCLAIN DESIGN GROUP, INC.
1843 NW 39 DRIVE
GAINESVILLE, FL 32605
TEL 352.372.2808
FAX 352.372.6622

CONSULTANT
SEEDY-BISCH
AUSSERE SULZBACHER STR. 118
NURNBERG, GERMANY
TEL 0911/59 90 99
FAX 0911/59 98 05

THIS DRAWING, AS AN INSTRUMENT OF SERVICE, IS AND SHALL REMAIN, PROPERTY OF CROXTON COLLABORATIVE ARCHITECTS. THIS DRAWING SHALL NOT BE REPRODUCED, PUBLISHED, USED ON OTHER PROJECTS, USED FOR ADDITIONS, OR USED IN COMPLETION OF THIS PROJECT BY OTHERS WITHOUT THE WRITTEN CONSENT OF CROXTON COLLABORATIVE ARCHITECTS/GOULD EVANS ASSOCIATES.

NO. 0026/REVISED DATE

100% CONSTRUCTION DOCUMENTS

DRAWING NAME

MECHANICAL DETAILS II

DATE DRAWING NUMBER

11.21.01

SCALE NTS

M-8

DRAWN BY/DESIGNED BY MO/MP

