

**M.E. RINKER, Sr. HALL**  
SCHOOL OF BUILDING CONSTRUCTION

UNIVERSITY OF FLORIDA-GAINESVILLE  
PROJECT NO. BR-191

ARCHITECTS  
**CROXTON COLLABORATIVE/  
GOULD EVANS ASSOCIATES**  
CROXTON COLLABORATIVE ARCHITECTS  
475 FIFTH AVENUE  
NEW YORK, NY 10017  
TEL 212.683.1988  
FAX 212.683.2799  
GOULD EVANS ASSOCIATES  
5405 WEST CYPRESS STREET  
TAMPA, FL 33607  
TEL 813.288.0729  
FAX 813.288.0231

MECHANICAL ENGINEERS  
**LEHR ASSOCIATES**  
130 WEST 30TH STREET  
NEW YORK, NY 10001-4092  
TEL 212.947.8050  
FAX 212.967.0569

STRUCTURAL ENGINEER  
**WALTER P. MOORE**  
201 EAST KENNEDY BOULEVARD  
TAMPA, FL 33602  
TEL 813.221.2424  
FAX 813.221.2289

CIVIL ENGINEERS  
**BROWN & CULLEN, INC.**  
3530 HW 43 STREET  
GAINESVILLE, FL 32605  
TEL 352.375.8999  
FAX 352.375.0833

LANDSCAPE ARCHITECTS  
**McCLAIN DESIGN GROUP, INC.**  
1843 NW 39 DRIVE  
GAINESVILLE, FL 32605  
TEL 352.372.2808  
FAX 352.372.6622

CONSULTANT  
**SEEGY-BISCH**  
AUSSERE SULZBACHER STR. 118  
MUNSTER, GERMANY  
TEL 0911/59 90 98  
FAX 0911/59 98 05

THIS DRAWING, AS AN INSTRUMENT OF SERVICE, IS AND SHALL REMAIN, PROPERTY OF CROXTON COLLABORATIVE ARCHITECTS. THIS DRAWING SHALL NOT BE REPRODUCED, PUBLISHED, USED ON OTHER PROJECTS, USED FOR ADDITIONS, OR USED IN CONNECTION OF THIS PROJECT BY OTHERS EXCEPT BY AGREEMENT IN WRITING. © 2001 CROXTON COLLABORATIVE ARCHITECTS/GOULD EVANS ASSOCIATES.

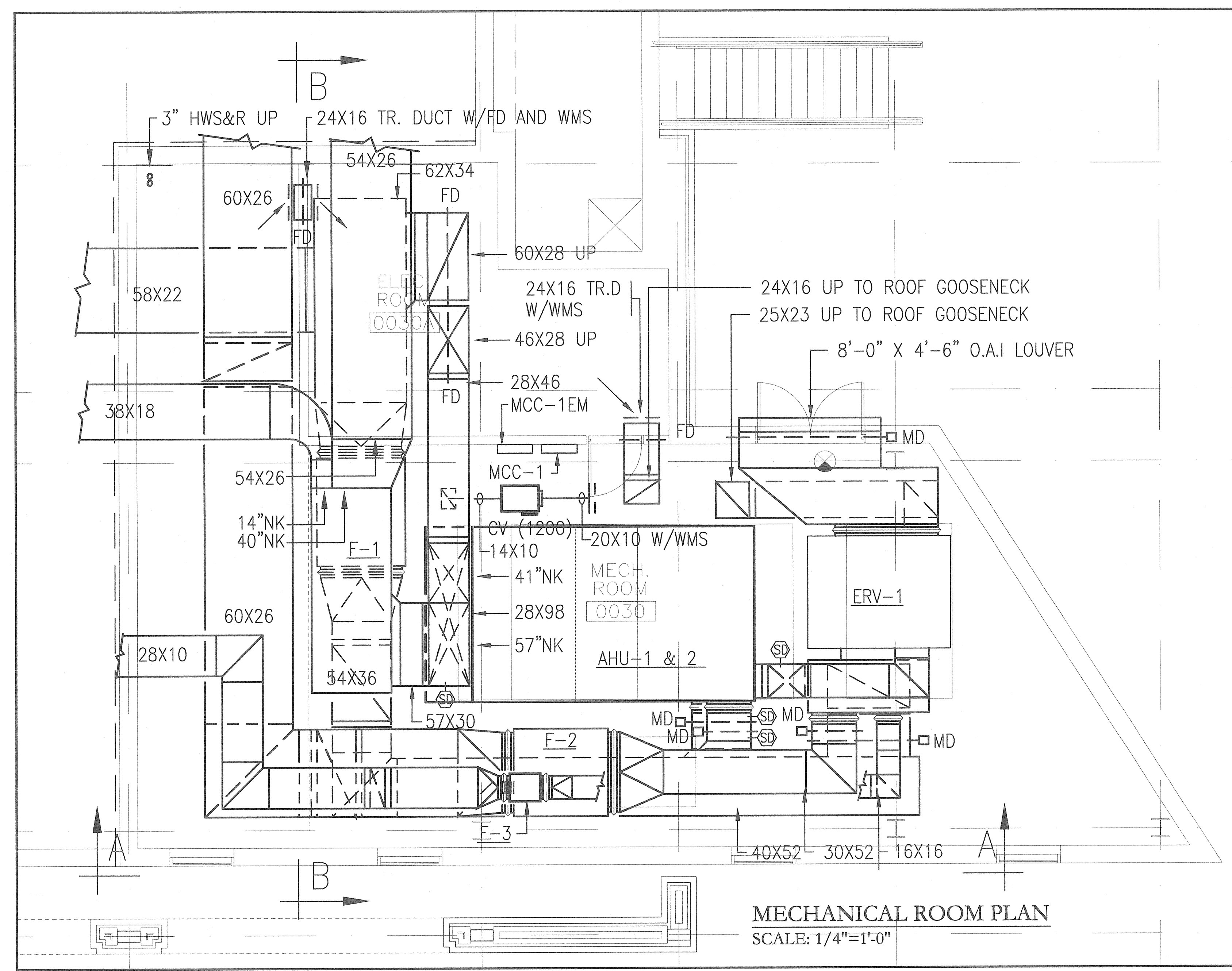
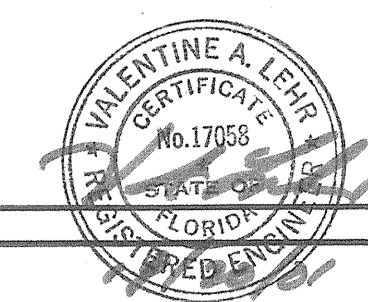
NO. ISSUE/REVISION DATE

100% CONSTRUCTION DOCUMENTS

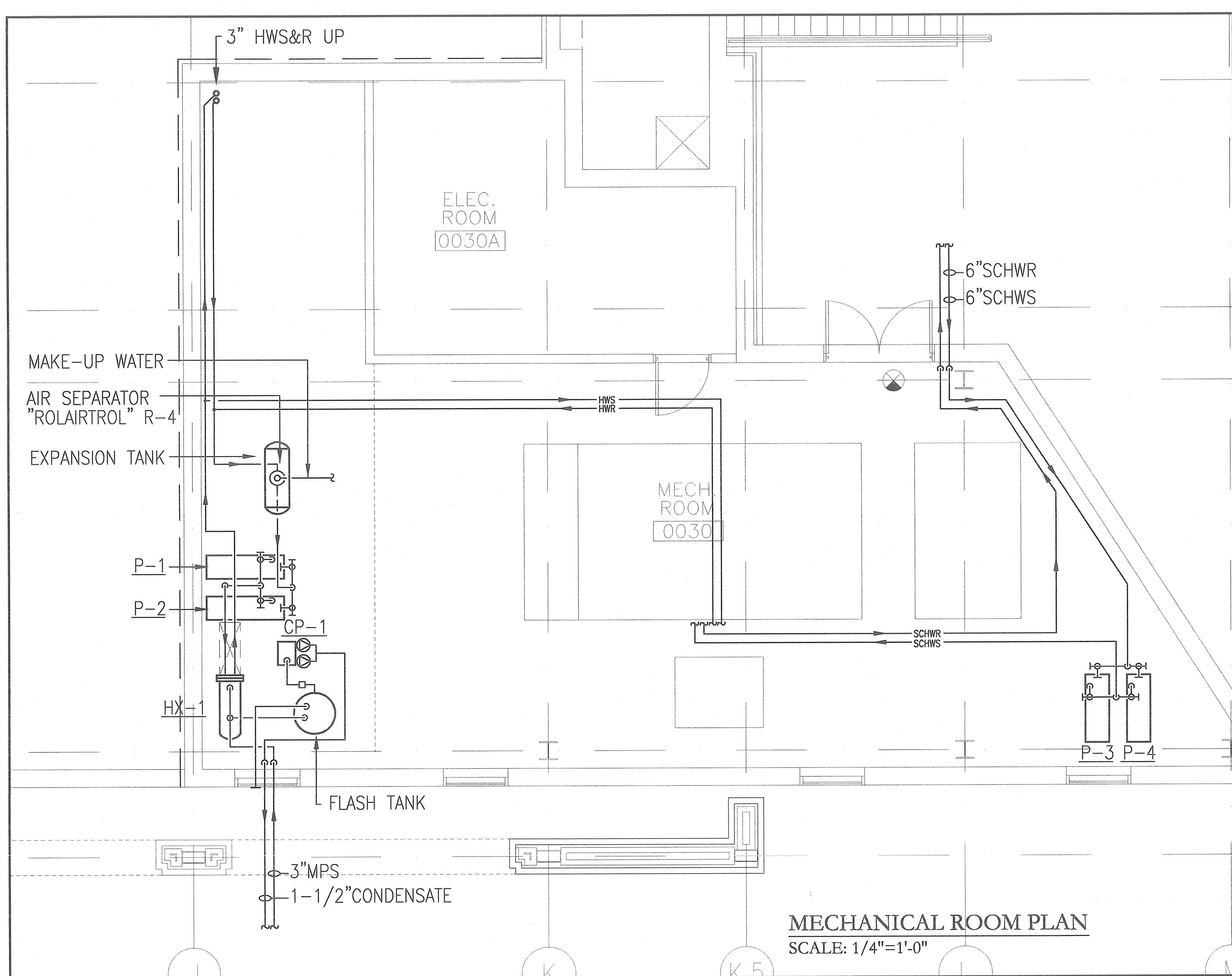
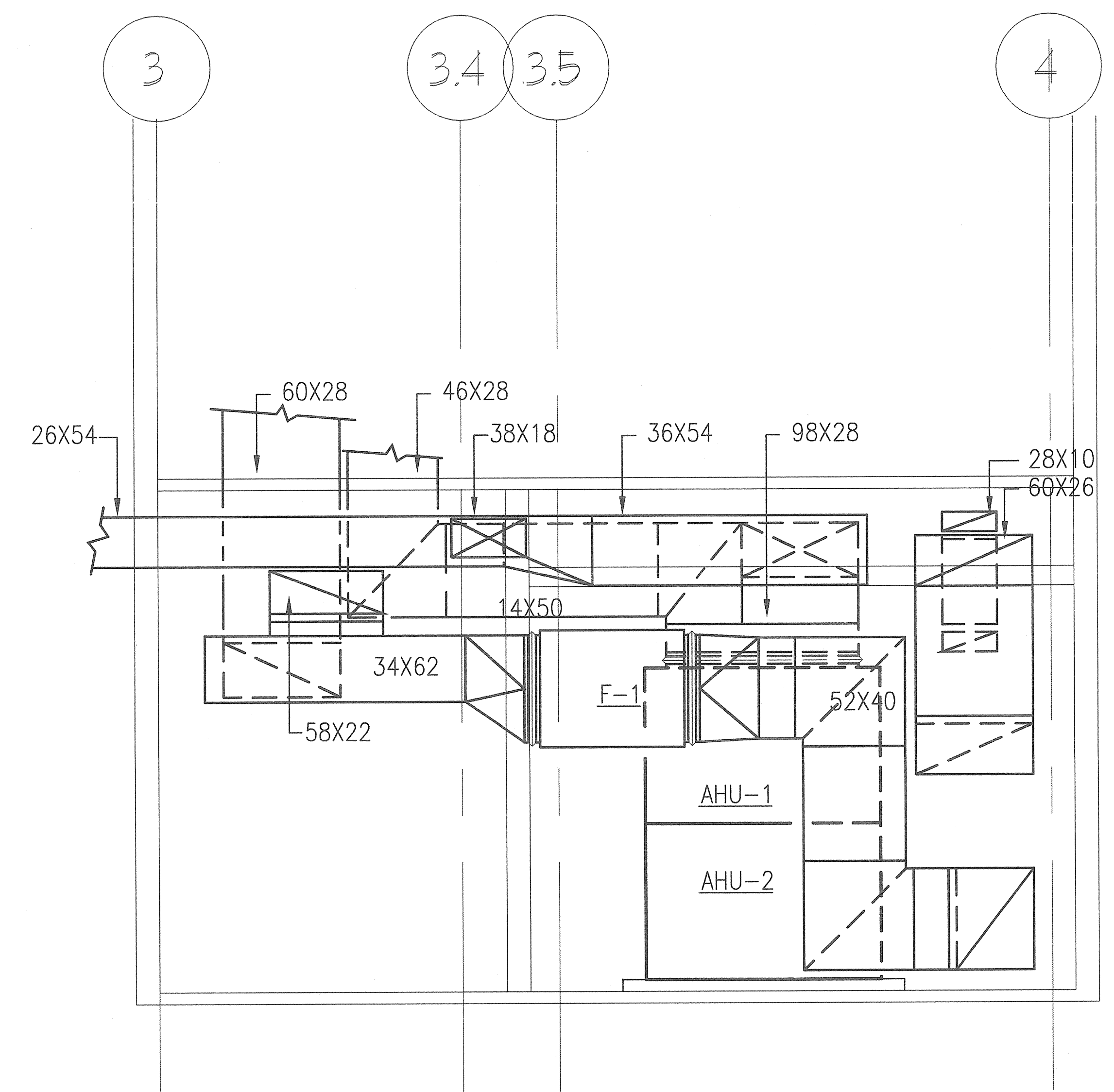
DRAWING NAME  
**MECHANICAL  
MER PART PLAN  
AND SECTIONS**

DATE 11.21.01  
SCALE AS NOTED  
DRAWN BY/DESIGNED BY MO/MP

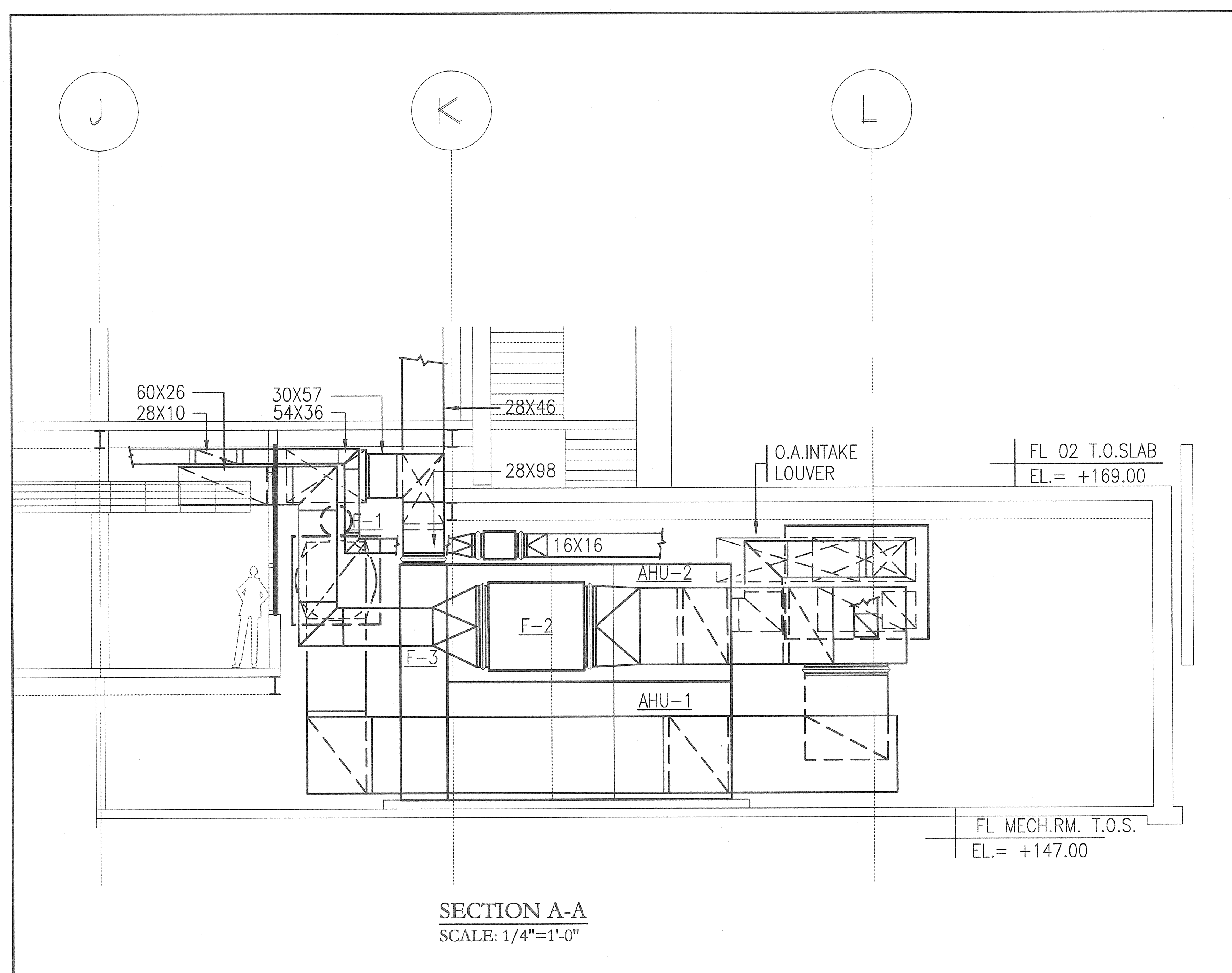
**M-9**



**SECTION B-B**  
SCALE: 1/4"=1'-0"



**MECHANICAL ROOM PLAN**  
SCALE: 1/4"=1'-0"



**SECTION A-A**  
SCALE: 1/4"=1'-0"

G:\1440\MECH\1440M-9.dwg Nov 16, 2001 - 15:27:06 mopolina