

# M.E. RINKER, Sr. HALL SCHOOL OF BUILDING CONSTRUCTION

UNIVERSITY OF FLORIDA-GAINESVILLE  
PROJECT NO. BR-191

PROJECT  
CROXTON COLLABORATIVE/  
GOULD EVANS ASSOCIATES

CROXTON COLLABORATIVE ARCHITECTS

475 FIFTH AVENUE  
NEW YORK, NY 10017  
TEL 212.683.1988  
FAX 212.683.2999

GOULD EVANS ASSOCIATES

5405 WEST CYPRESS STREET  
TAMPA, FL 33607  
TEL 813.288.0799  
FAX 813.288.0231

MECHANICAL ENGINEER

LEHR ASSOCIATES

130 WEST 30TH STREET  
NEW YORK, NY 10001-4092  
TEL 212.947.8650  
FAX 212.967.2059

STRUCTURAL ENGINEER

WALTER P. MOORE

201 EAST KENNEDY BOULEVARD  
TAMPA, FL 33602  
TEL 813.221.2424  
FAX 813.221.2289

CIVIL ENGINEER

BROWN & CULLEN, INC.

3530 NW 43 STREET  
GAINESVILLE, FL 32605  
TEL 352.375.8999  
FAX 352.375.0833

LANDSCAPE ENGINEER

McCLAIN DESIGN GROUP, INC.

1843 NW 39 DRIVE  
GAINESVILLE, FL 32605  
TEL 352.372.2808  
FAX 352.372.6822

CONSULTANT

SEEGY-BISCH

AUSSERE GULZBAOCHER STR. 118  
NURNBERG, GERMANY  
TEL 0911/59 90 99  
FAX 0911/59 98 05

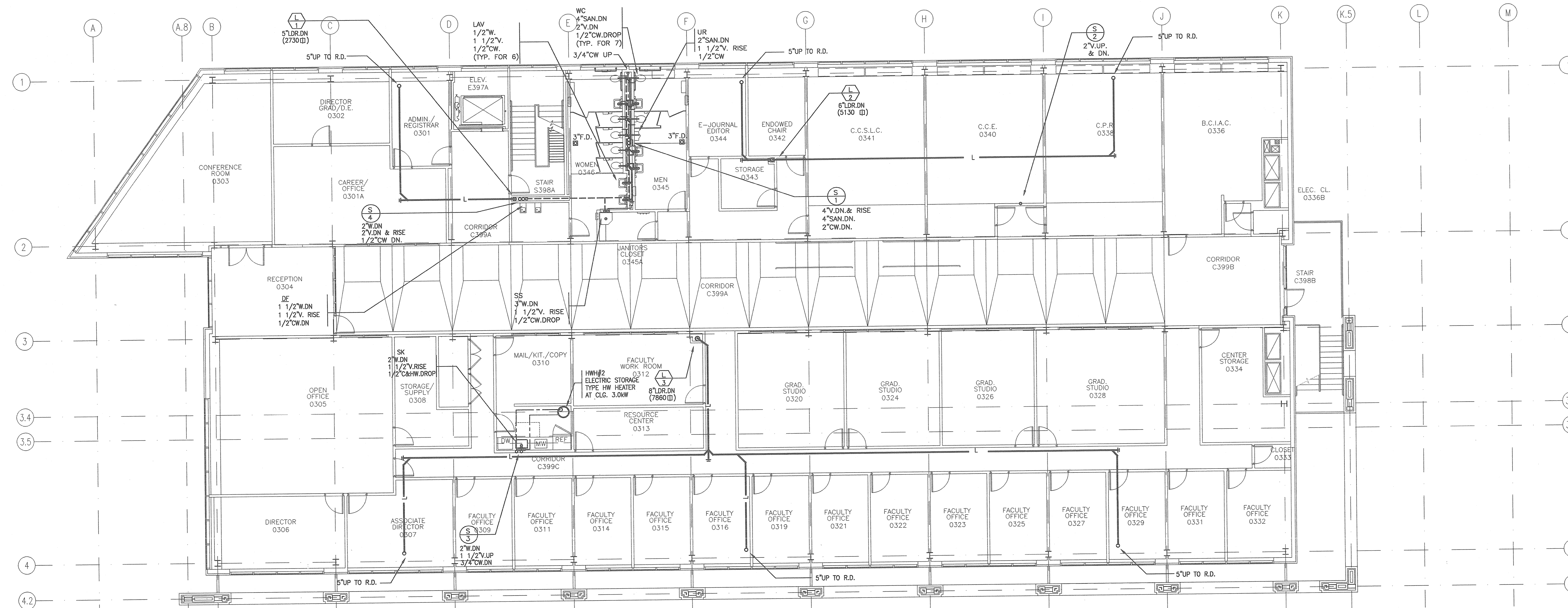
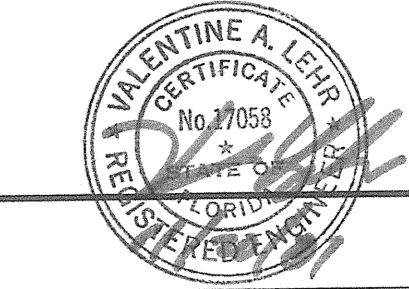
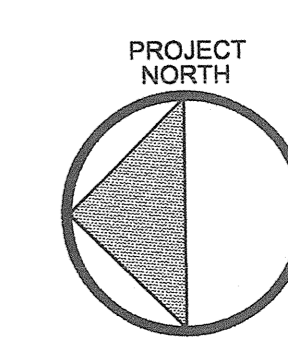
THIS DRAWING, AS AN INSTRUMENT OF SERVICE, IS AND SHALL REMAIN THE PROPERTY OF CROXTON COLLABORATIVE ARCHITECTS. THIS DRAWING SHALL NOT BE REPRODUCED, PUBLISHED, USED ON OTHER PROJECTS, USED FOR ADVERTISEMENTS, OR USED IN COMPLETION OF THIS PROJECT BY OTHERS EXCEPT BY AGREEMENT IN WRITING. © 2001 CROXTON COLLABORATIVE ARCHITECTS/GOULD EVANS ASSOCIATES.

NO. ISSUE/REVISION DATE

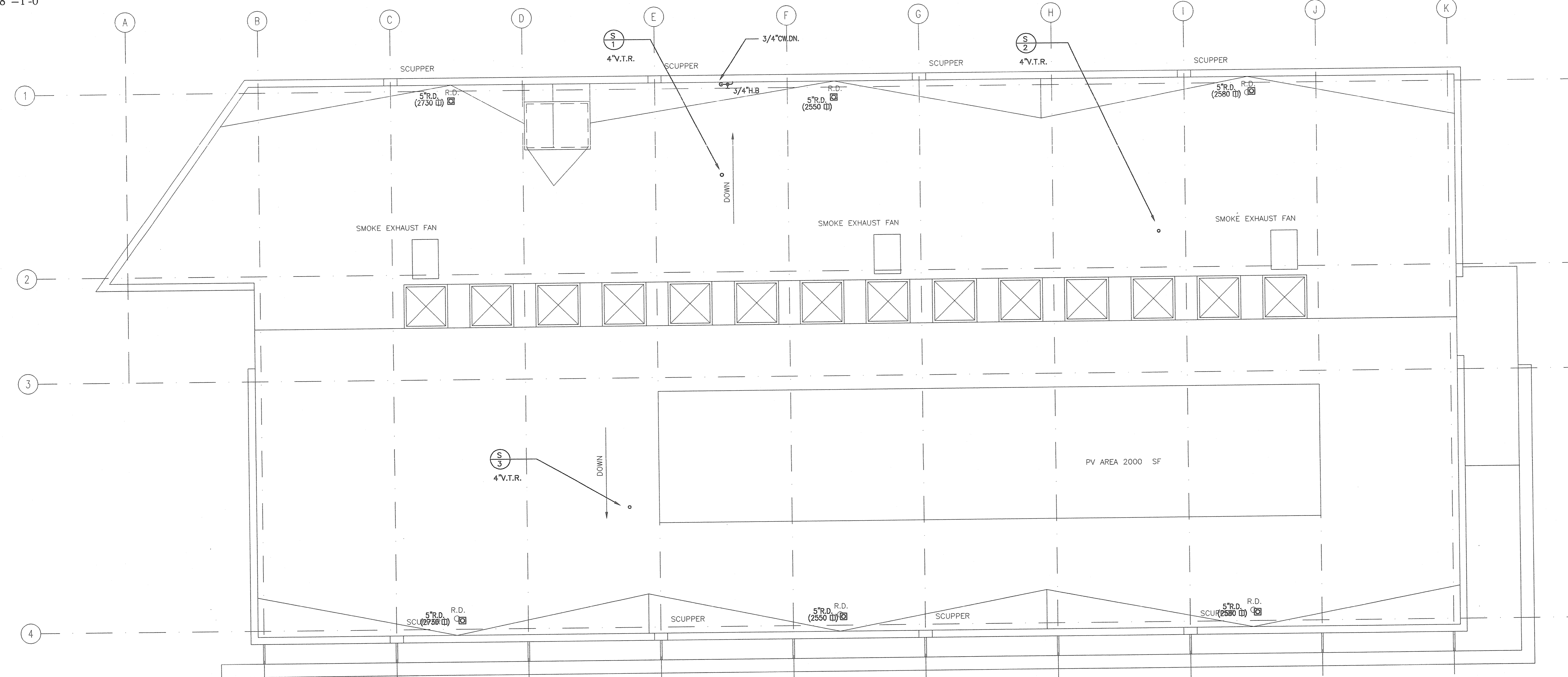
100% CONSTRUCTION DOCUMENTS

DRAWING TYPE  
PLUMBING  
3rd Fl. & Roof Plan

DATE 11/21/01  
SCALE AS NOTED  
DRAWN BY/CHECKED BY AT



THIRD FLOOR  
SCALE: 1/8"=1'-0"



ROOF PLAN  
SCALE: 1/8"=1'-0"

6:\1440\Plumb\mp\4440-103.dwg Jun 05, 2001 - 16:18:37 ashman