

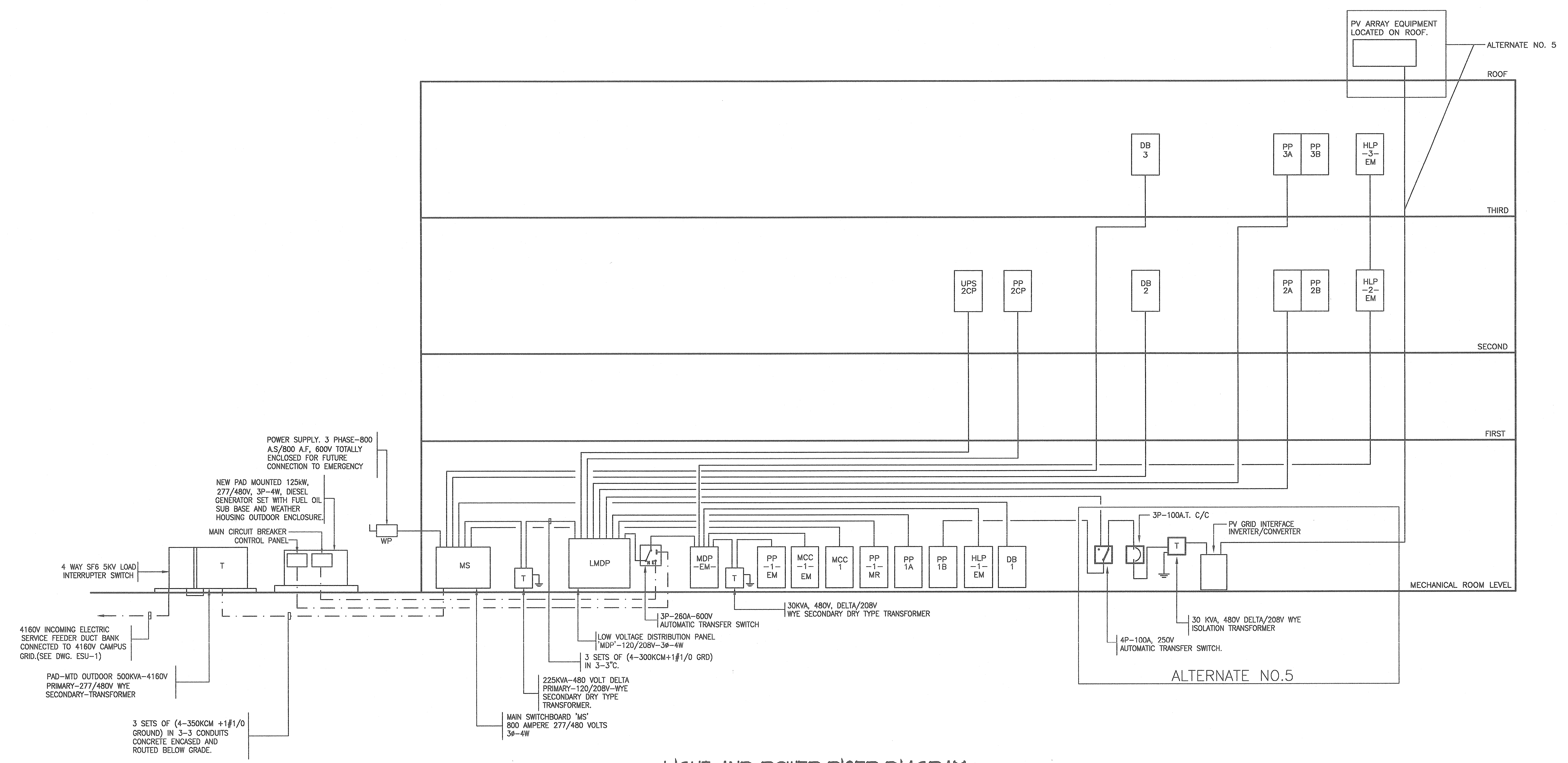


M.E. RINKER, Sr. HALL
SCHOOL OF BUILDING CONSTRUCTION
 UNIVERSITY OF FLORIDA-GAINESVILLE
 PROJECT NO. BR-191

ARCHITECTS
CROXTON COLLABORATIVE/
GOULD EVANS ASSOCIATES
 CROXTON COLLABORATIVE ARCHITECTS
 475 FIFTH AVENUE
 NEW YORK, NY 10017
 TEL 212.683.1998
 FAX 212.683.2799
 GOULD EVANS ASSOCIATES
 5405 WEST CYPRESS STREET
 TAMPA, FL 33607
 TEL 813.288.0729
 FAX 813.288.0231
 MECHANICAL ENGINEERS
LEHR ASSOCIATES
 130 EAST 30TH STREET
 NEW YORK, NY 10001-4092
 TEL 212.947.8050
 FAX 212.967.2959
 STRUCTURAL ENGINEER
WALTER P. MOORE
 201 EAST KENNEDY BOULEVARD
 TAMPA, FL 33602
 TEL 813.221.2424
 FAX 813.221.2289
 CIVIL ENGINEER
BROWN & CULLEN, INC.
 3530 NW 43 STREET
 GAINESVILLE, FL 32605
 TEL 352.375.8999
 FAX 352.375.0833
 LANDSCAPE ARCHITECTS
McLAIN DESIGN GROUP, INC.
 1843 NW 39 DRIVE
 GAINESVILLE, FL 32605
 TEL 352.372.2808
 FAX 352.372.6622
 CONSULTANT
SEEGY-BISCH
 AUSSERE SULZBACHER STR. 118
 NURNBERG, GERMANY
 TEL 0911/59 50 99
 FAX 0911/59 58 05

THIS DRAWING, AS AN INSTRUMENT OF SERVICE, IS AND SHALL REMAIN PROPERTY OF CROXTON COLLABORATIVE ARCHITECTS. THIS DRAWING SHALL NOT BE REPRODUCED, PUBLISHED, USED IN OTHER PROJECTS, USED FOR ADDITIONS, OR USED IN COMPLETION OF THIS PROJECT BY OTHERS EXCEPT BY AGREEMENT IN WRITING. ©2001 CROXTON COLLABORATIVE ARCHITECTS/GOULD EVANS ASSOCIATES.

100% CONSTRUCTION DOCUMENTS
 DRAWING TITLE
LIGHTING & POWER RISER DIAGRAM & PANEL SCHEDULE
 DATE
 DRAWING NUMBER
 11/21/01
 SCALE
 NTS
 DRAWN BY/CHECKED BY
 NA/JH
E004



LIGHT AND POWER RISER DIAGRAM
 NTS

SWITCHBOARD: MS V L TO L: 480 # 3 WIRE: 4+G
 BUS RATING: 800A V L TO N: 277 HZ: 60
 SCA SYM: 60,000A

CKT#	SERVES	KVA(HP)	AMPS	CIRCUIT BREAKER			FEEDER			CONDUIT		REMARKS
				POLES	FRAME	TRIP	NO.	SIZE	GRD	NO.	SIZE	
1	MAIN			3	800	800						
2	MDP VIA TRANSF.	225		3	400	300	3	500KCM	4	1	3-1/2"	
3	MDP-EM (VIA ATS)	158	186	3	225	225	4	250KCM	6	1	2"	HMCP C/B
4	DB-1			3	225	100	4	2	8	1	1-1/2"	
5	DB-2			3	225	100	4	2	8	1	1-1/2"	
6	DB-3			3	225	100	4	2	8	1	1-1/2"	
7	AHU-1			3	225	125	3	2	8	1	1-1/4"	HMCP C/B
8	AHU-2			3	225	125	3	2	8	1	1-1/4"	HMCP C/B
9	MCC-1			3	225	150	3	1/0	6	1	2"	
10	SPARE			3								
11	SPARE			3								
12	SPARE			3								
13												
14												
15												
16												
17												
18												

DISTR. PANEL: LMDP V L TO L: 120/208 # 3 WIRE: 4+G
 BUS RATING: 800A V L TO N: 120/208 HZ: 60
 SCA SYM: 22,000A

CKT#	SERVES	KVA(HP)	AMPS	CIRCUIT BREAKER			FEEDER			CONDUIT		REMARKS
				POLES	FRAME	TRIP	NO.	SIZE	GRD	NO.	SIZE	
1	PP-1A			3	225	125	4	3/0	6	1	2 1/2"	
2	PP-1B			3	225	100	4	2	8	1	1 1/2"	
3	PP-2A			3	225	175	4	3/0	6	1	2 1/2"	
4	PP-2B			3	225	125	4	1/0	6	1	2"	
5	PP-3A			3	225	175	4	3/0	6	1	2 1/2"	
6	PP-3B			3	225	100	4	2	8	1	1 1/2"	
7	PP-2CP			3	225	175	4	3/0	6	1	2 1/2"	
8	UPS-2CP			3	225	175	4	3/0	6	1	2 1/2"	
9	PP-1MR			3	225	150	4	3/0	6	1	2 1/2"	
10	SPARE			3	225							
11	SPARE			3	225							
12	SPARE			3	225							

PANEL SCHEDULES VOLTS: 120/208
 PHASES: 3
 WIRES: 4+G

PANEL DESIGN.	MOUNTING	BUS RATING	BREAKERS			SWITCH	FUSE	P.OLES	BRANCH CIRCUITS			TOTAL	REMARKS
			SYM	TRIP	AMPS				TRIP	SYM	ACTIVE		
PP-1A	S	225	22K	100				1	20	10K	23	42	
PP-1B	S	225	22K	100				1	20	10K	42	42	
PP-2A	S	225	22K	100				1	20	10K	42	42	
PP-2A SECT-I	S	225	22K	100				1	20	10K	42	42	
PP-2A SECT-II	S	225	22K	100				1	20	10K	42	42	
PP-2B	S	225	22K	100				1	20	10K	42	42	
PP-3A	S	225	22K	100				1	20	10K	42	42	
PP-3A SECT-I	S	225	22K	100				1	20	10K	42	42	
PP-3A SECT-II	S	225	22K	100				1	20	10K	42	42	
PP-3B	S	225	22K	100				1	20	10K	42	42	

PANEL SCHEDULES VOLTS: 277/480
 PHASES: 3
 WIRES: 4+G

PANEL DESIGN.	MOUNTING	BUS RATING	BREAKERS			SWITCH	FUSE	P.OLES	BRANCH CIRCUITS			TOTAL	REMARKS
			SYM	TRIP	AMPS				TRIP	SYM	ACTIVE		
HLP-1-EM	S	100	22K	50				1	20	10K	12	12	
HLP-2-EM	S	100	22K	50				1	20	10K	12	12	
HLP-3-EM	S	100	22K	50				1	20	10K	12	12	

G:\440\ELEC\440E001RIS.dwg Nov. 20, 2001 - 10:41:55 nspostal