

M.E. RINKER, Sr. HALL
SCHOOL OF BUILDING CONSTRUCTION
 UNIVERSITY OF FLORIDA-GAINESVILLE
 PROJECT NO. BR-191

ARCHITECTS
 CROXTON COLLABORATIVE/
 GOULD EVANS ASSOCIATES
 475 FIFTH AVENUE
 NEW YORK, NY 10017
 TEL 212.683.1998
 FAX 212.683.2799

GOULD EVANS ASSOCIATES
 5405 WEST CYPRESS STREET
 TAMPA, FL 33607
 TEL 813.288.0729
 FAX 813.288.0231

MECHANICAL ENGINEERS
 LEHR ASSOCIATES
 130 WEST 30TH STREET
 NEW YORK, NY 10001-4092
 TEL 212.947.8050
 FAX 212.967.2059

STRUCTURAL ENGINEERS
 WALTER P. MOORE
 201 EAST KENNEDY BOULEVARD
 TAMPA, FL 33602
 TEL 813.221.2424
 FAX 813.221.2289

CIVIL ENGINEERS
 BROWN & CULLEN, INC.
 3530 NW 43 STREET
 GAINESVILLE, FL 32605
 TEL 352.375.8999
 FAX 352.375.0833

LANDSCAPE ARCHITECTS
 McCLAIN DESIGN GROUP, INC.
 1843 NW 39 DRIVE
 GAINESVILLE, FL 32605
 TEL 352.372.2808
 FAX 352.372.6622

CONSULTANT
 SEEGBY-BISCH
 AUSSERE SULZBACHER STR. 118
 NURNBERG, GERMANY
 TEL 0911/59 90 99
 FAX 0911/59 98 05

THIS DRAWING AS AN INSTRUMENT OF SERVICE IS AND SHALL REMAIN THE PROPERTY OF CROXTON COLLABORATIVE ARCHITECTS. THIS DRAWING SHALL NOT BE REPRODUCED, PUBLISHED, USED ON OTHER PROJECTS, USED FOR ADDITIONS, OR USED IN COMPLETION OF THIS PROJECT BY OWNERS EXCEPT BY AGREEMENT IN WRITING. © 2001 CROXTON COLLABORATIVE ARCHITECTS/GOULD EVANS ASSOCIATES.

NO. 1056/REVISED DATE

100% CONSTRUCTION DOCUMENTS

DRAWING NAME
FIRE PROTECTION MECHANICAL ROOM LVL. FIRST FLOOR

DATE 11/21/01
 SCALE 1/8"=1'-0"
 DRAWN BY/DESIGNED BY PG/MS

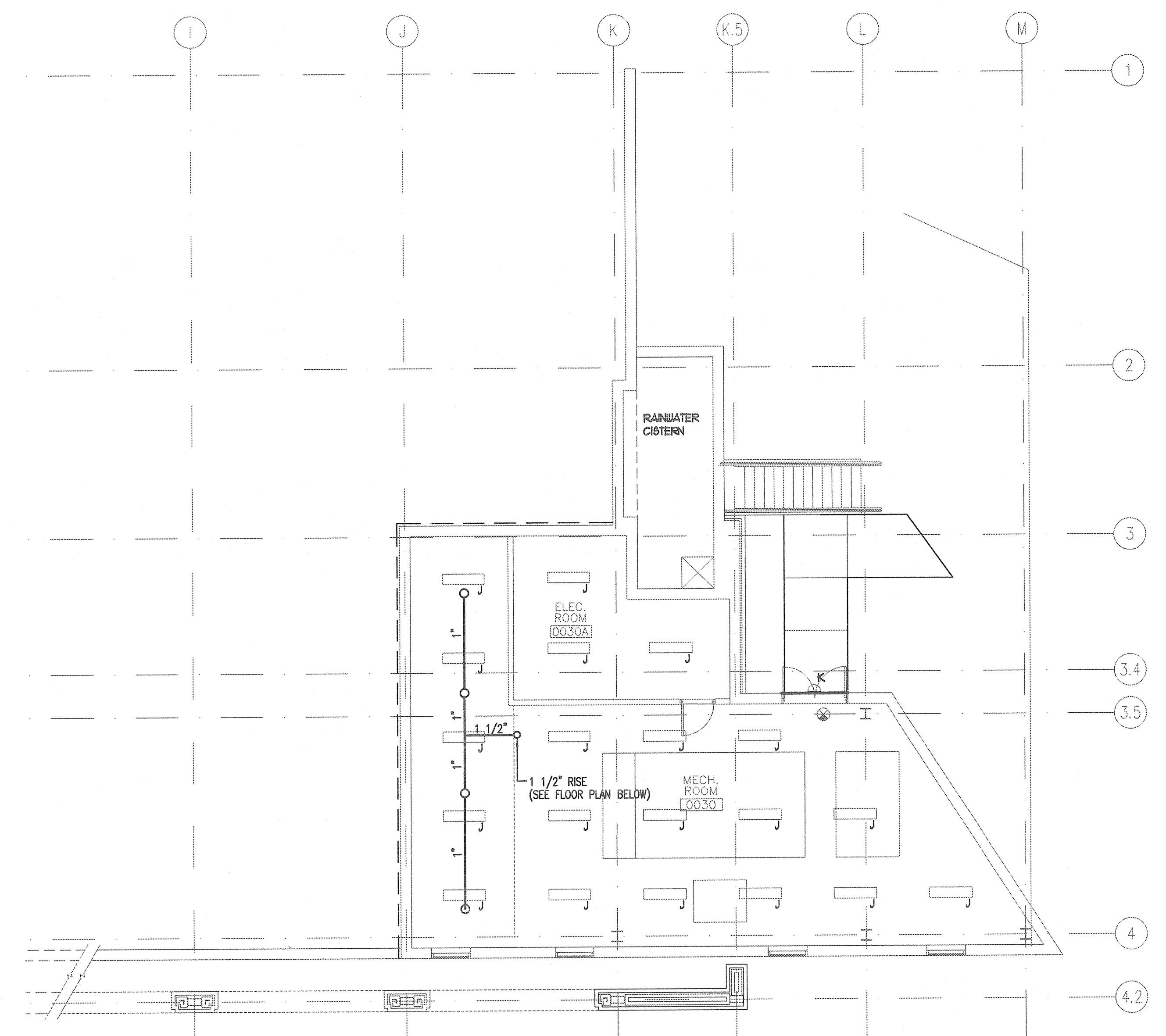
F-2

- MECHANICAL ROOMS:**
1. SPRINKLER SPACING BASED UPON ORDINARY HAZARD 130 SQUARE FEET PER HEAD.
 2. PROVIDE SPRINKLERS BELOW DUCT-WORK IN EXCESS OF 48" IN WIDTH.
 3. PROVIDE ADDITIONAL SPRINKLER HEADS AS REQUIRED DUE TO OBSTRUCTIONS BY BEAMS, DUCT-WORK AND OTHER MECHANICAL EQUIPMENT.
 4. PROVIDE SPRINKLER HEAD GUARDS AS REQUIRED.

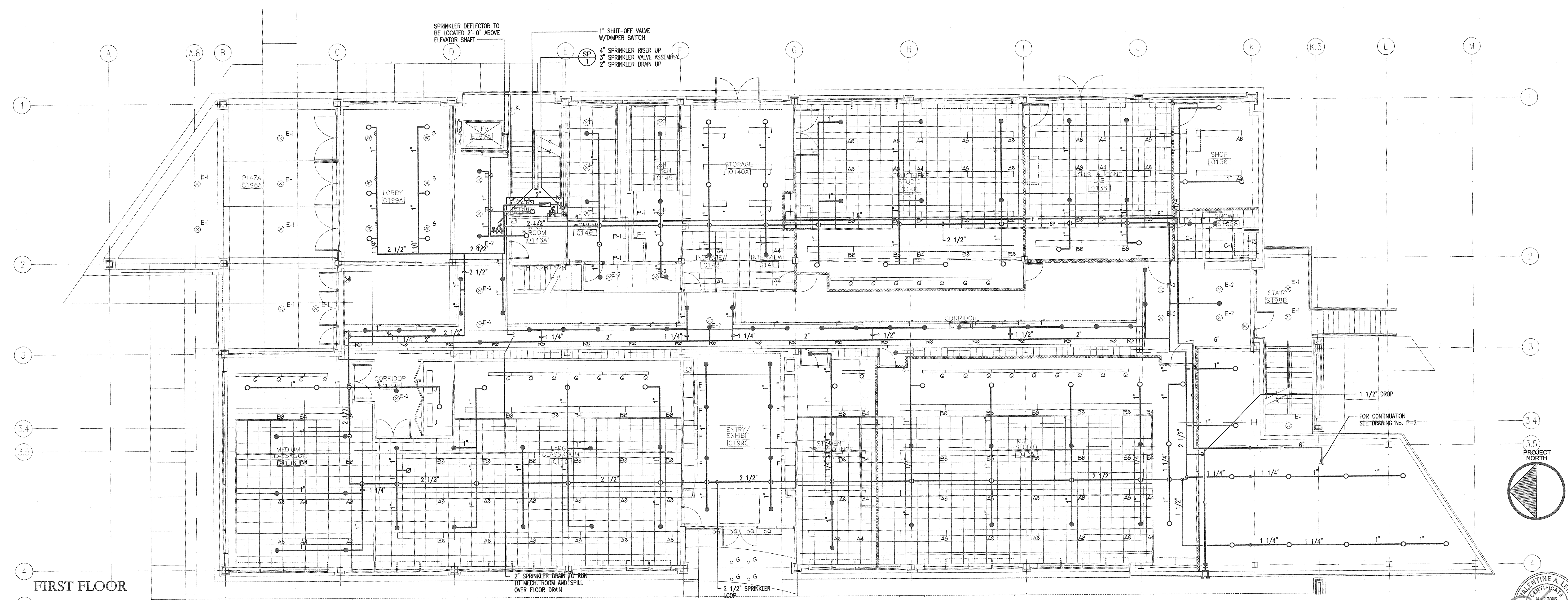
- SPRINKLER CRITERIA NOTES:**
1. PROVIDE NEW NET PIPE SPRINKLER SYSTEM THROUGH-OUT THE FLOOR.
 2. CONTRACTOR TO COORDINATE WITH INTERFERENCES WITH NEW ACCESS DOORS, EXIT LIGHTS, LIGHTING FIXTURES AND DIFFUSERS, ETC.
 3. CONTRACTOR TO VERIFY LOCATION OF SPRINKLER HEADS IN CONJUNCTION WITH FIELD CONDITIONS AND SUBMIT AS-BUILT DRAWINGS SHOWING FINAL SPRINKLER HEADS AND PIPING LOCATIONS.
 4. SEMI-RECESSED SPRINKLERS BELOW SUSPENDED PANELS/CEILING WITHIN THE ROOMS SHALL HAVE THEIR ESCUTCHEON AND SPRINKLER INSTALLED PARALLEL TO THE PANELS/CEILING.

Symbol	Description	Quant.
●	NEW SEMI-RECESSED SPRINKLER	-
○*	NEW UPRIGHT/PENDENT SPRINKLER	-

* IN ELEVATOR MACHINE ROOM THE SPRINKLER SHALL BE OF HIGHER TEMP. RATING (175°F).



MECHANICAL ROOM LEVEL
 SCALE: 1/8"=1'-0"



FIRST FLOOR
 SCALE: 1/8"=1'-0"

S:\1440\Drawings\1440BP-102.dwg Nov 13, 2001 - 07:40:21 pgmario

