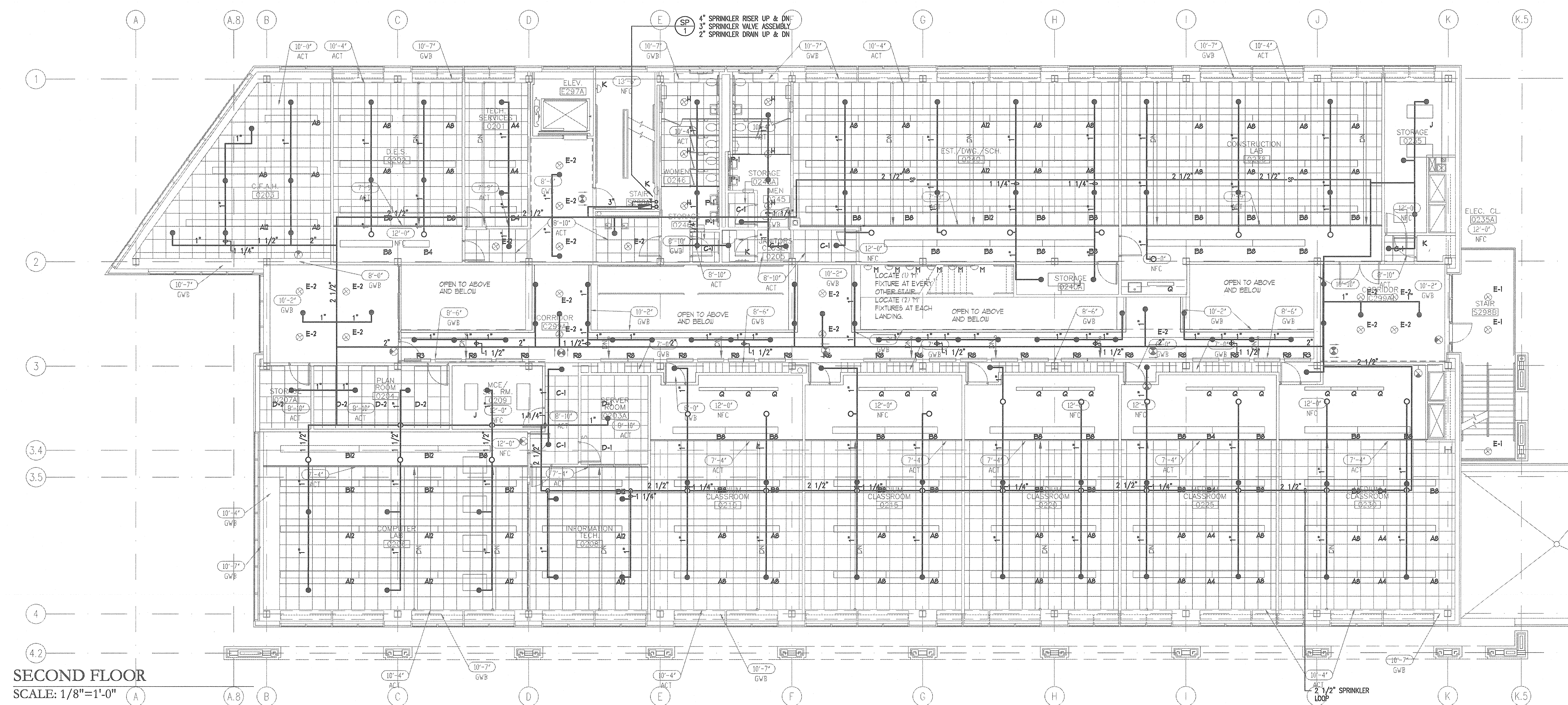




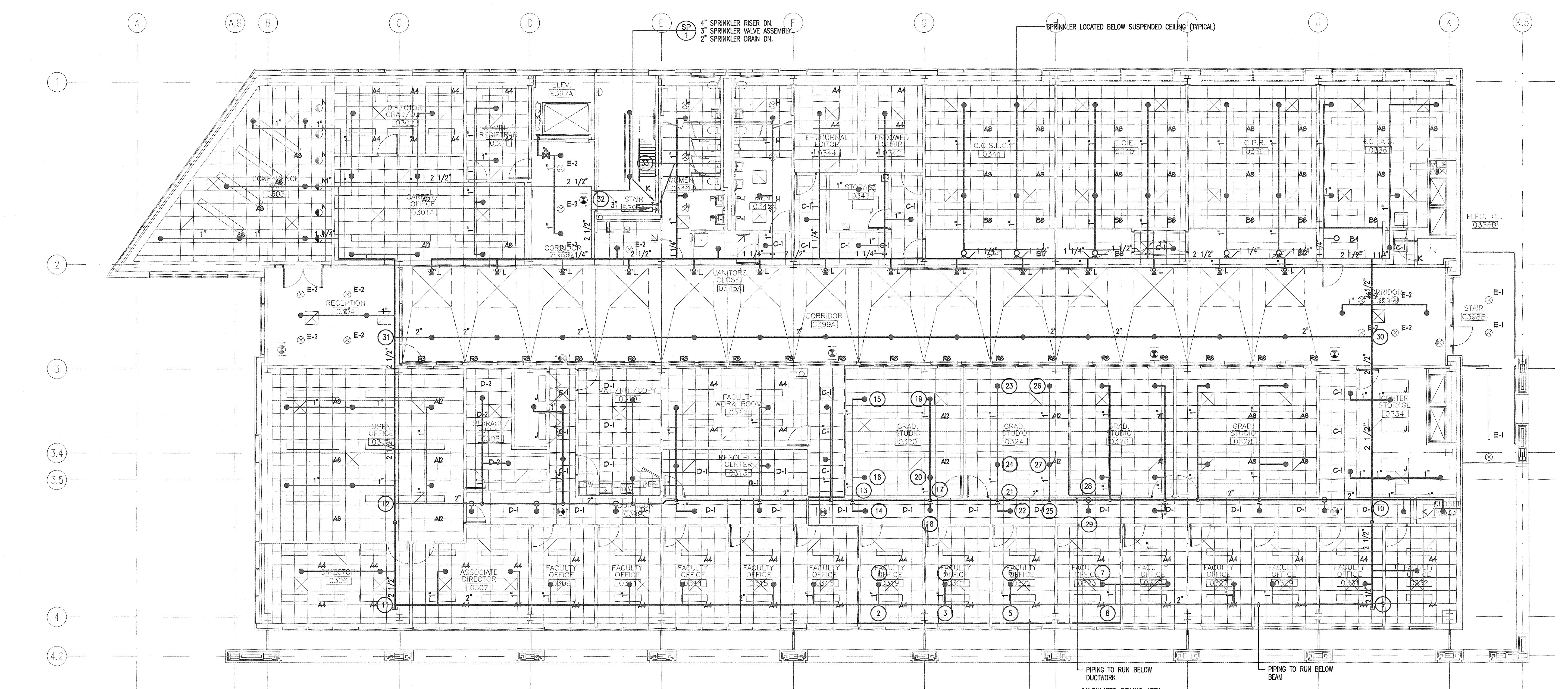
M.E. RINKER, Sr. HALL
SCHOOL OF BUILDING CONSTRUCTION
 UNIVERSITY OF FLORIDA-GAINESVILLE
 PROJECT NO. BR-191

- SPRINKLER CRITERIA NOTES:**
1. PROVIDE NEW WET PIPE SPRINKLER SYSTEM THROUGH-OUT THE FLOOR.
 2. CONTRACTOR TO COORDINATE WITH INTERFERENCES WITH NEW ACCESS DOORS, EXIT LIGHTS, LIGHTING FIXTURES AND DIFFUSERS, ETC.
 3. CONTRACTOR TO VERIFY LOCATION OF SPRINKLER HEADS IN CONJUNCTION WITH FIELD CONDITIONS AND SUBMIT AS-BUILT DRAWINGS SHOWING FINAL SPRINKLER HEADS AND PIPING LOCATIONS.
 4. SEMI-RECESSED SPRINKLERS BELOW SUSPENDED PANELS/CEILING WITHIN THE ROOMS SHALL HAVE THEIR ESCOTCHION AND SPRINKLER INSTALLED PARALLEL TO THE PANELS/CEILING.

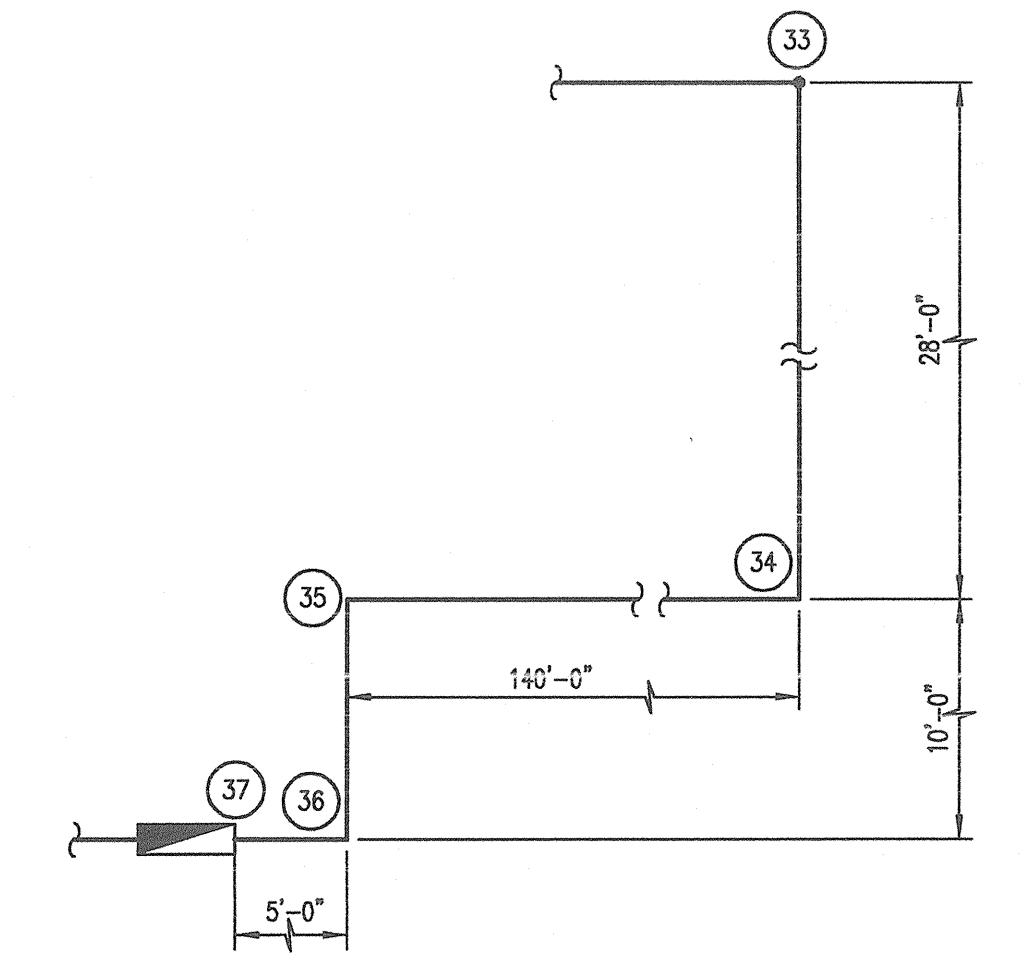
Symbol	Description	Quant.
●	NEW SEMI-RECESSED SPRINKLER	-
○	NEW UPRIGHT/PENDENT SPRINKLER	-
▲	NEW SIDEWALL STANDARD RESPONSE SPRINKLER (ALL SPRINKLERS LOCATED @ THE SKYLIGHT TO BE OF INTERMEDIATE TEMP. RATING)	-



SECOND FLOOR
 SCALE: 1/8"=1'-0"



THIRD FLOOR
 SCALE: 1/8"=1'-0"



HYDRAULIC CALCULATION
NODE NUMBERS CONTINUATION
 N.T.S.

ARCHITECTS
 CROXTON COLLABORATIVE/
 GOULD EVANS ASSOCIATES
 CROXTON COLLABORATIVE ARCHITECTS
 475 FIFTH AVENUE
 NEW YORK, NY 10017
 TEL 212.683.1998
 FAX 212.683.2799
 GOULD EVANS ASSOCIATES
 5405 WEST CYPRESS STREET
 TAMPA, FL 33607
 TEL 813.288.0729
 FAX 813.288.0231
MECHANICAL ENGINEERS
 LEHR ASSOCIATES
 130 WEST 30TH STREET
 NEW YORK, NY 10001-4092
 TEL 212.947.8050
 FAX 212.967.2059
STRUCTURAL ENGINEERS
 WALTER P. MOORE
 201 EAST KENNEDY BOULEVARD
 TAMPA, FL 33602
 TEL 813.221.2424
 FAX 813.221.2289
CIVIL ENGINEERS
 BROWN & CULLEN, INC.
 3530 NW 43 STREET
 GAINESVILLE, FL 32605
 TEL 352.375.8999
 FAX 352.375.0833
LANDSCAPE ARCHITECTS
 McCLAIN DESIGN GROUP, INC.
 1843 NW 39 DRIVE
 GAINESVILLE, FL 32605
 TEL 352.372.2808
 FAX 352.372.6622
CONSULTANT
 SEEGV-BISCH
 AUSSERE SULZBACHER STR. 118
 NURNBERG, GERMANY
 TEL 0911/59 90 99
 FAX 0911/59 98 05

THIS DRAWING, AS AN INSTRUMENT OF SERVICE IS AND SHALL REMAIN, PROPERTY OF CROXTON COLLABORATIVE ARCHITECTS. THIS DRAWING SHALL NOT BE REPRODUCED, PUBLISHED, USED ON OTHER PROJECTS, USED FOR ADDITIONS, OR USED IN COMPLETION OF THIS PROJECT BY OTHERS EXCEPT BY AGREEMENT IN WRITING. © 2001 CROXTON COLLABORATIVE ARCHITECTS/GOULD EVANS ASSOCIATES.

NO. 1086/REVISION DATE

100% CONSTRUCTION DOCUMENTS

DRAWING NAME
FIRE PROTECTION SECOND & THIRD FLOOR PLANS

DATE 11/21/01
 SCALE AS NOTED
 DRAWN BY/DESIGNED BY PG / MS

F-3

G:\4440\Plan\191\103.dwg, Nov. 12, 2001 - 11:02:37 p.m.

